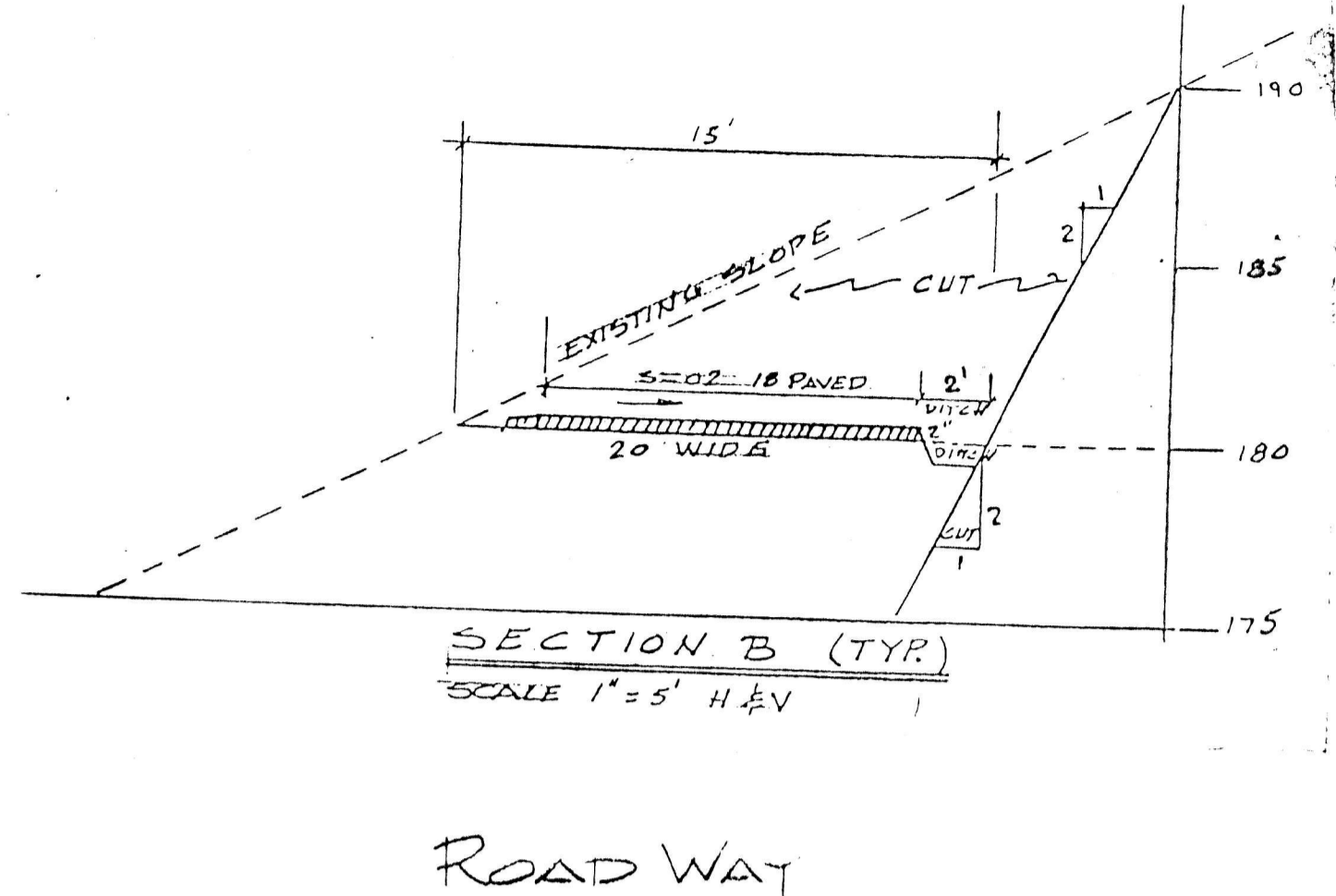


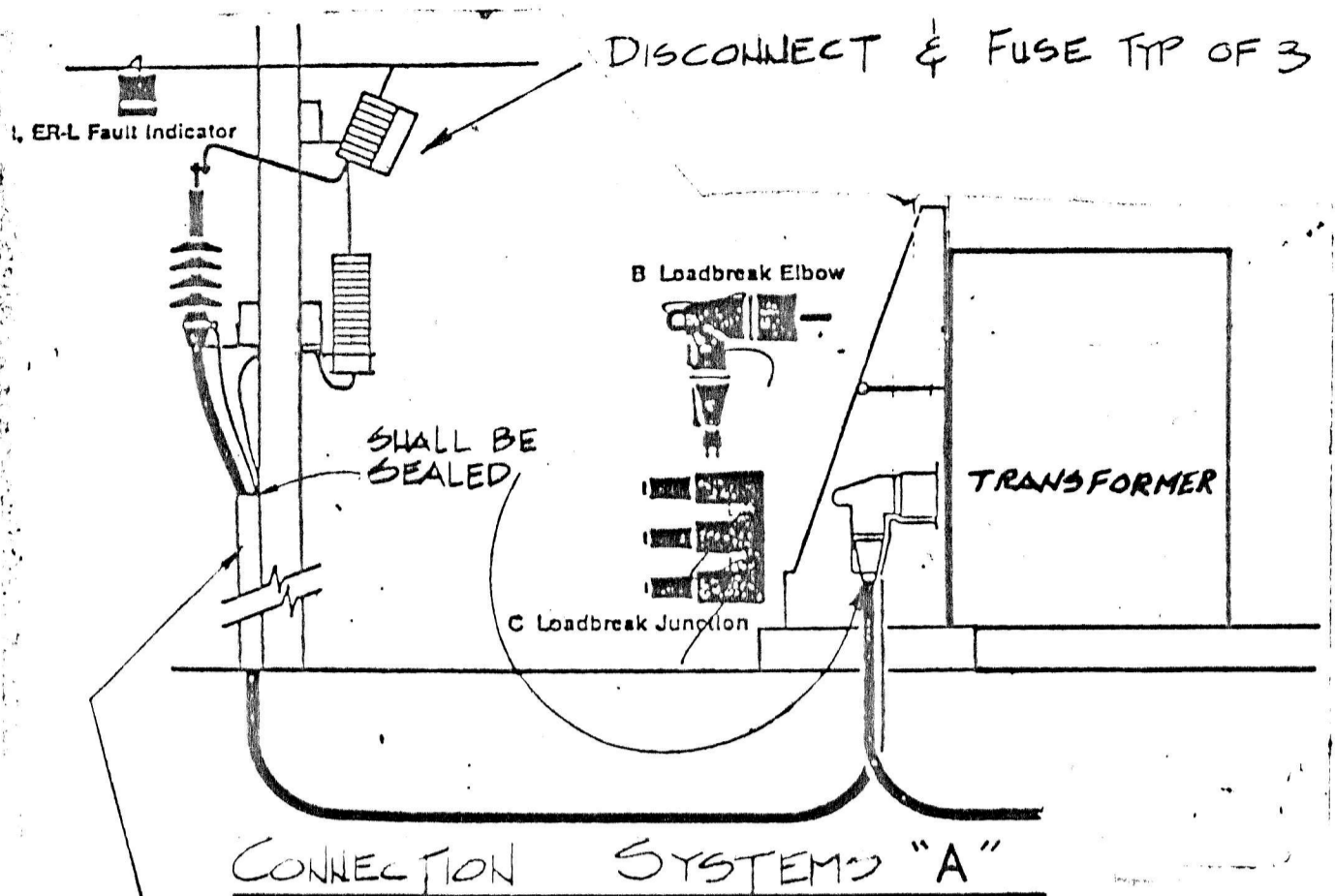
LOCATION MAP

3 PHASE SYSTEM			
TRANS. #	A	B	PHASES
1	2		
3	4		
5	6		
7	8		
9	10		
11			
12			
13			
14			
15			
16			
17			
18			
19			
20			
21			
22			
23			
24			
25			
26			
27			
28			
29			
30			
31			
32			
33			
34			
35			
36			
37			
38			
39			
40			
41			
42			
43			
44			
45			
46			
47			
48			
49			
50			

CALCULATE LOAD/PHASE

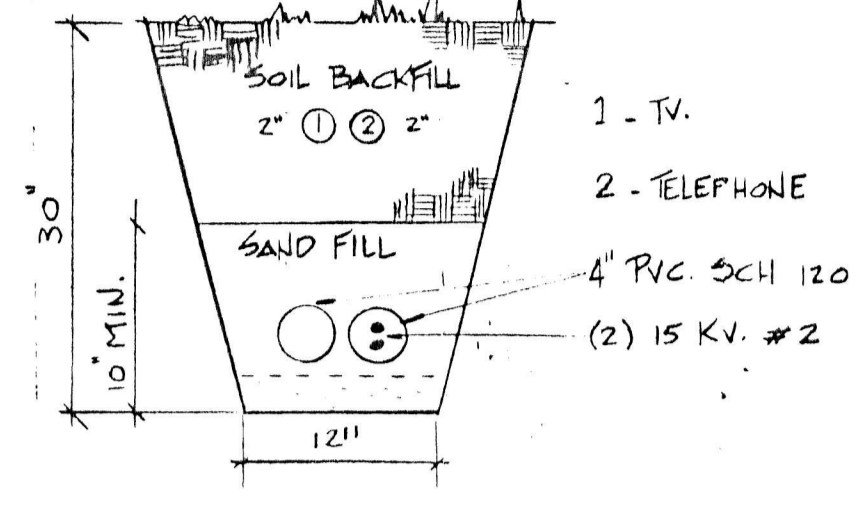


ROAD WAY



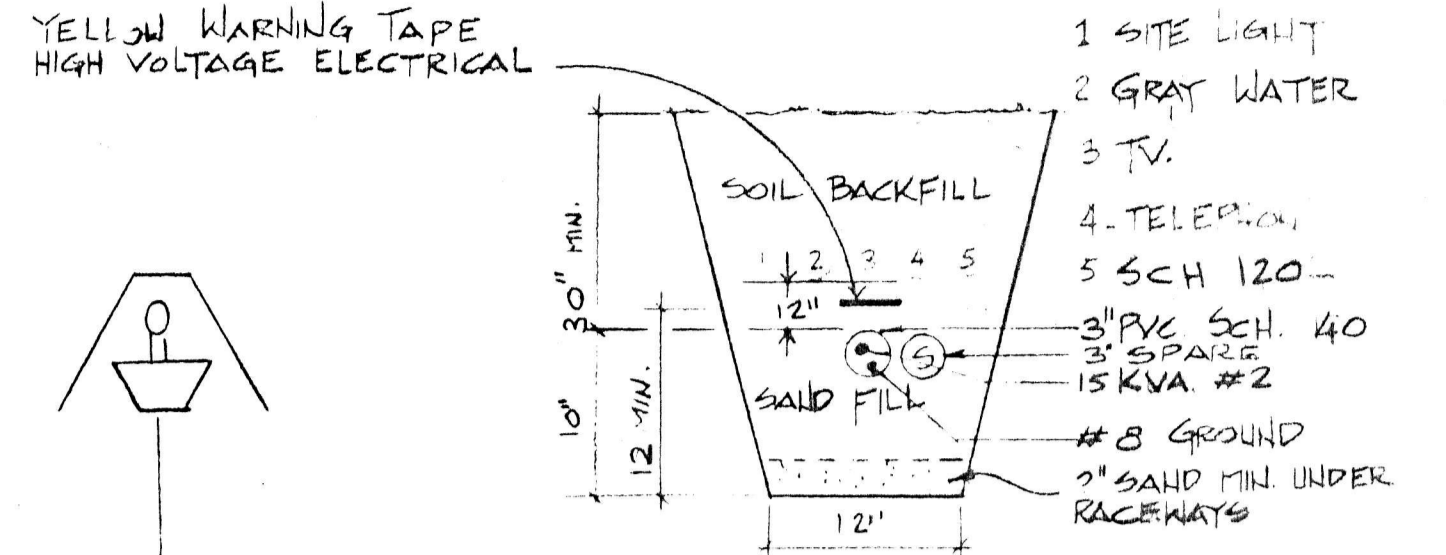
— H — HIGH VOLTAGE DISTRIBUTION
 — S — SECONDARY DISTRIBUTION

- NOTE:
 1. CONDUIT SHALL STAND 18" OFF WAPA POWER POLE.
 2. CONDUITS SHALL BE SEALED AT POLE & TRANSFORMER.



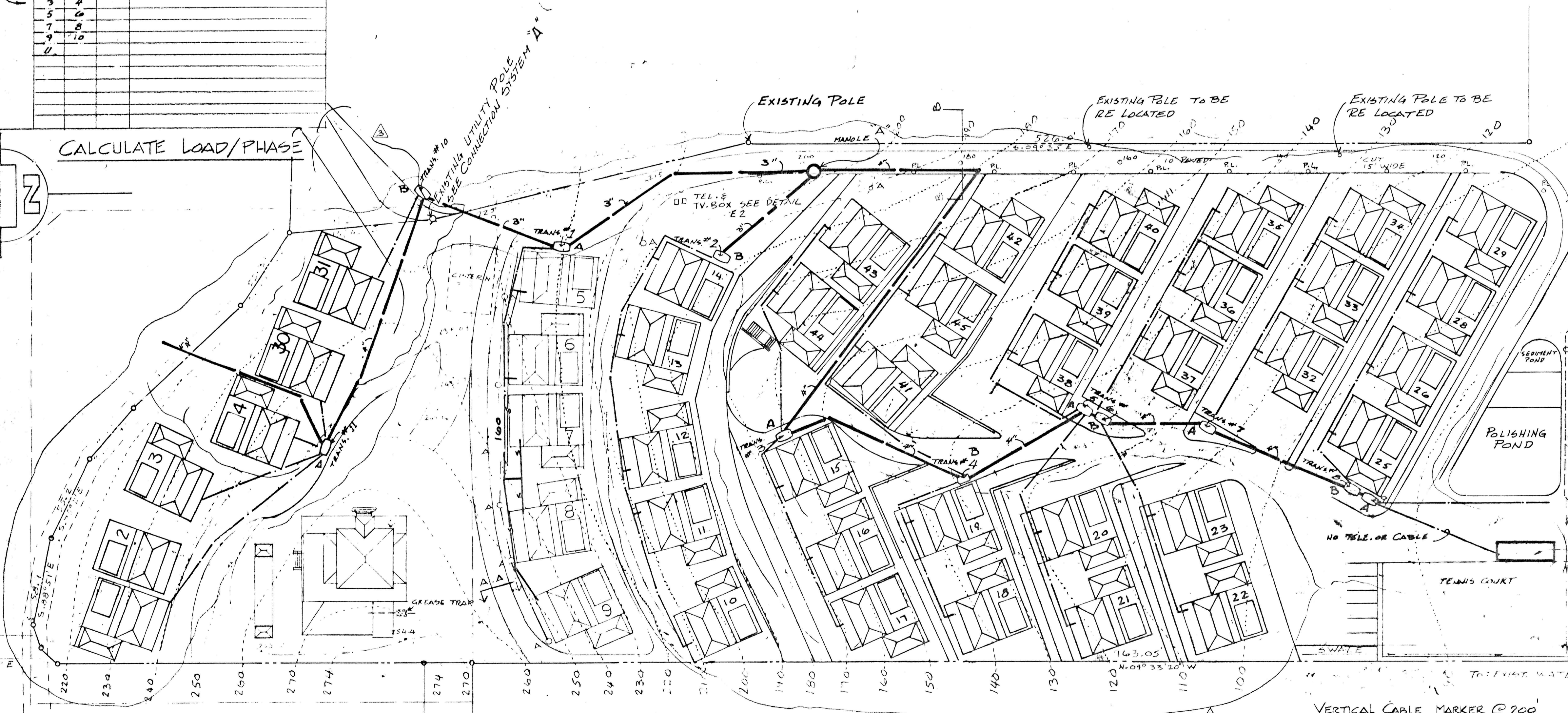
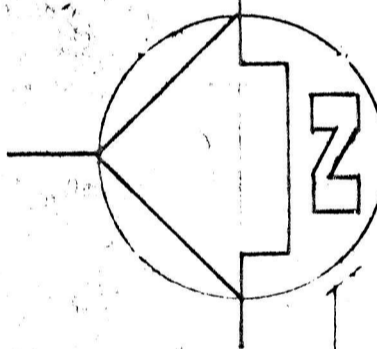
TRENCH SECTION

NOTE:
 CABLE TO BE TAPPED AT EACH HANDHOLE & TRANSFORMER

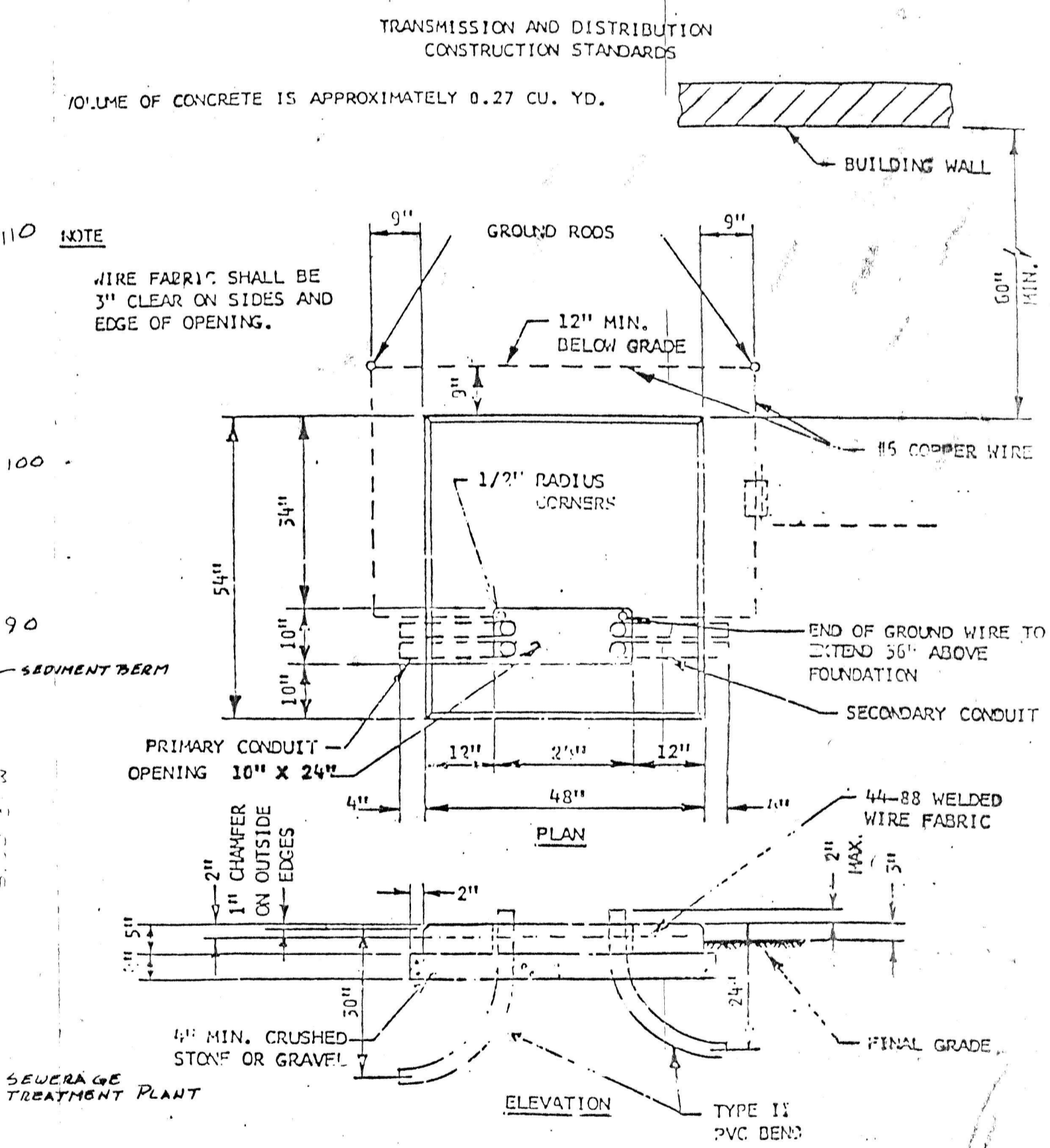


TRENCH SECTION

NOTE:
 IF PROPER TRENCH DEPTH CAN NOT BE REACHED, A 2" MIN. CONCRETE COVER SHALL BE USED



ELECTRICAL HIGH VOLTAGE DISTRIBUTION PLAN



ELECTRICAL MASTER SITE PLAN

PLOT No. 19A 6.501 AC.
 ESTATE TEAGUE BAY
 EAST END QUARTER "B"

VERTICAL CABLE MARKER @ 200'
 CABLE TAGGS IN HAND HOLES
 36" DEPTH UNDER ROADWAYS.
 2" SAND AT BOTTOM OF TRENCH.
 CABLE MARKER

CARIBBEAN CONSTRUCTION SERVICES AND ASSOCIATES

DATE	7/7/88	SCALE	AS SHOWN
VILLA MADELEINE		JOB No. 1232, 1235	