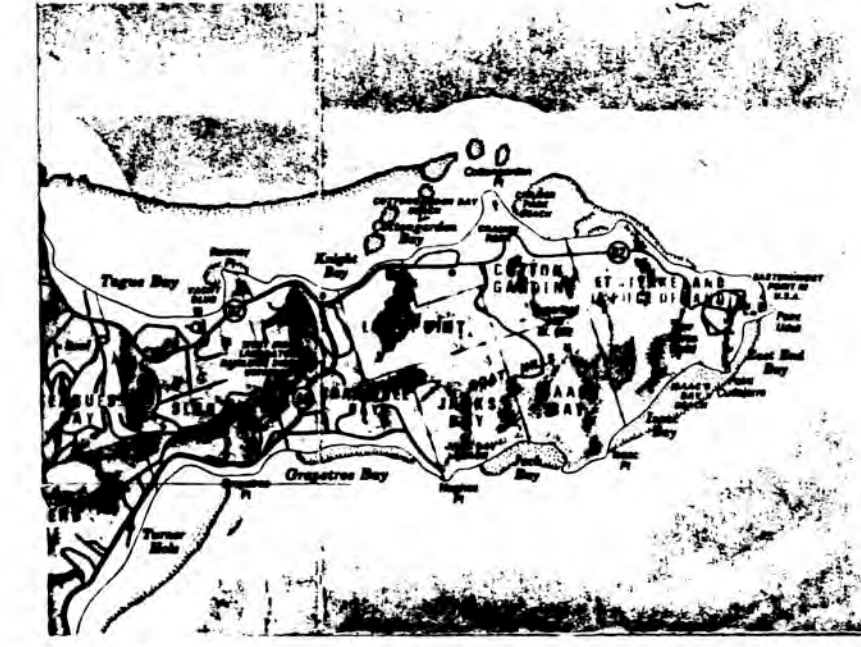


Site Location Map



General Notes

1. No utilities, servitudes or easements other than those shown hereon have been located or researched, where found, the surface features or locations are shown, the actual, nonvisible locations may vary from those shown hereon and should be located by the various agencies controlling their installation and maintenance prior to excavation or digging.
2. The Basis of Bearings and Coordinates shown hereon is Record North as shown on PWD Nos. 3344, 3344-A, rotate Bearings shown hereon Counter-Clockwise 9-00-00 to Grid North for the Puerto Rican East Zone Lambert Coordinate Grid on the North American Datum of 1983 (NAD83).
3. All Curved Boundary Lines shown hereon are tangential to their connecting lines unless specifically shown otherwise.
4. Record Plot lines have been correlated to measured positions by holding pts. "A" as good and rotating Record Dimensions to Lines "A"-B", as noted and shown hereon.
5. Subject Parcels are located in F.E.M.A. Flood Zone 0.
6. Subject Parcels are located in Planning Board Zone R-3.
7. See Sheet No. 1 of 1 for Potable Waterline Easement.

Map Revision Table

Date	Description of Revision
6/28/00	show underground electric to Greathouse-TMN

Surveyor's Certification

To: Raymond Roncini, et al. Island Title Svc. Corp. Fidelity National Title Ins. Co. of W. Va. Layers & Title Ins. Co. and all others' interest in title to the Subject Parcels.
 This is to certify that this map and the survey on which it is based were made in substantial conformity with ALTA/ACSM Minimum Standard Detail Requirements for Real Property Surveys and contain various items of Table A therefor.
 Date: June 25, 2000 Signed: M.P. Walker Jr., PLS

Map Legend

- Found Bound Posts or Iron Rods, as noted
- Set Bound Posts or Iron Rods, as noted
- △ Control Traverse or Computed Positions
- Utility Pole or Light Standard
- ⊖ Drainage or Sewerage Manhole
- ⊕ Catch Basin or Drop Inlet
- ⊙ Fire Hydrant or Stand Pipe
- Fenceline, barbed wire or chainlink
- ⊖ Subject Plot Perimeter Boundary Line
- ⊖ Overhead Utility Line, (T, E, CATV)
- ⊖ Underground Utility Line (D, W, S, Q, T, E, CATV)

Date: June 25, 2000 Scale: 1" = 50'

Surveyed and Mapped by the offices of:
 St. Croix Survey Engineering
 72 Flag Dr., Gallows Bay
 Christiansted, V.I. 00820
 Tel./FAX 340.773.5577

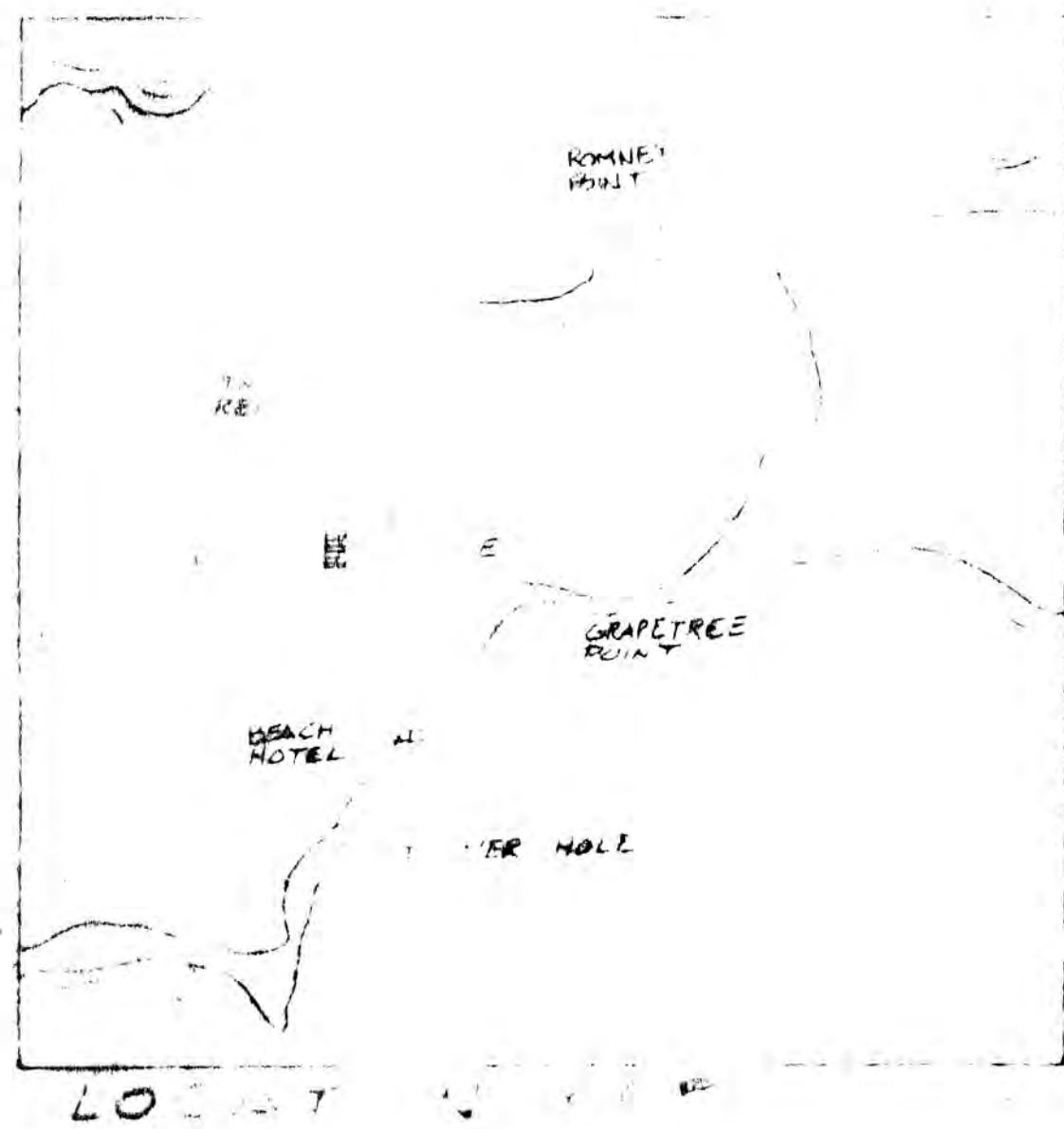
Asbuilt Boundary Survey
 Villa Madeleine Condominiums
 Plot Nos. 19-A, 19-AA, 17, 5-L
 Estate Teague Bay
 East End "B" Quarter
 Island of St. Croix
 United States Virgin Islands
 (Condominiums and Sewerage Easement)

Field: all Comps: MPW Checked by: MPW
 Approved and Certified by:
 Marshall P. Walker Jr. PLS Sheet No. 1 of 3
 Proj. No.: 00-891

Job ID: 073
 Job name: Plot No. 19-A, Est. Teague Bay, St. Croix, USVI
 Description: Boundary, 44'-Dwell
 Reference: PWD Nos. 3344, 3344A, 2823
 Projection: None
 Date printed: 12/06/00 1:08pm

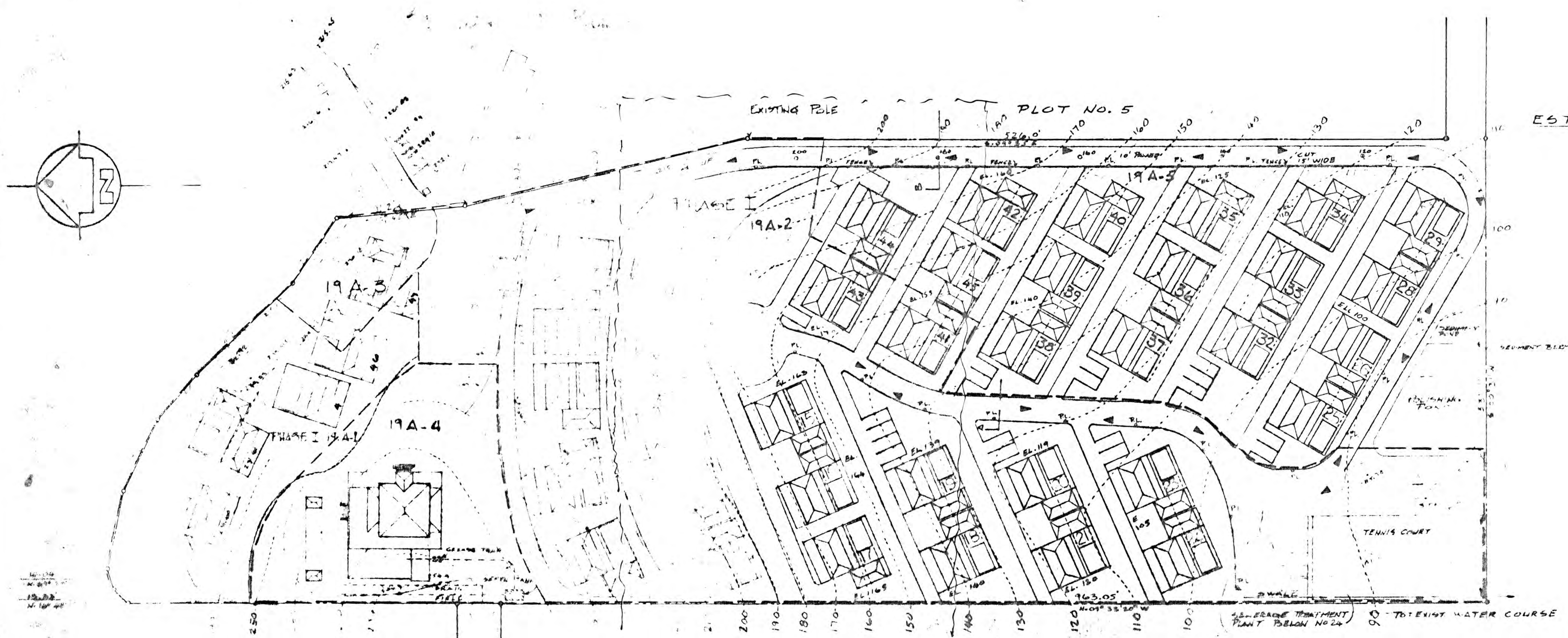
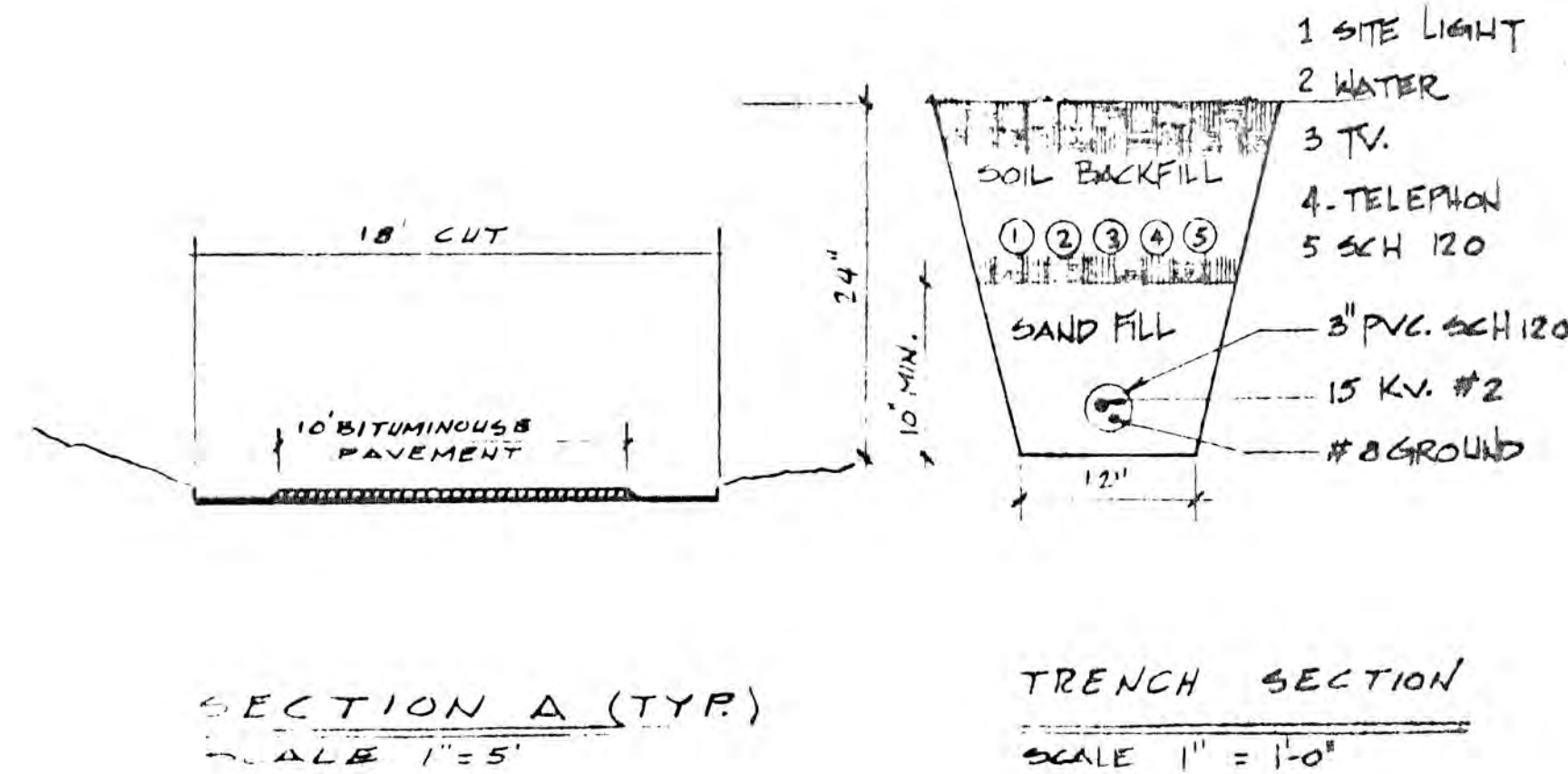
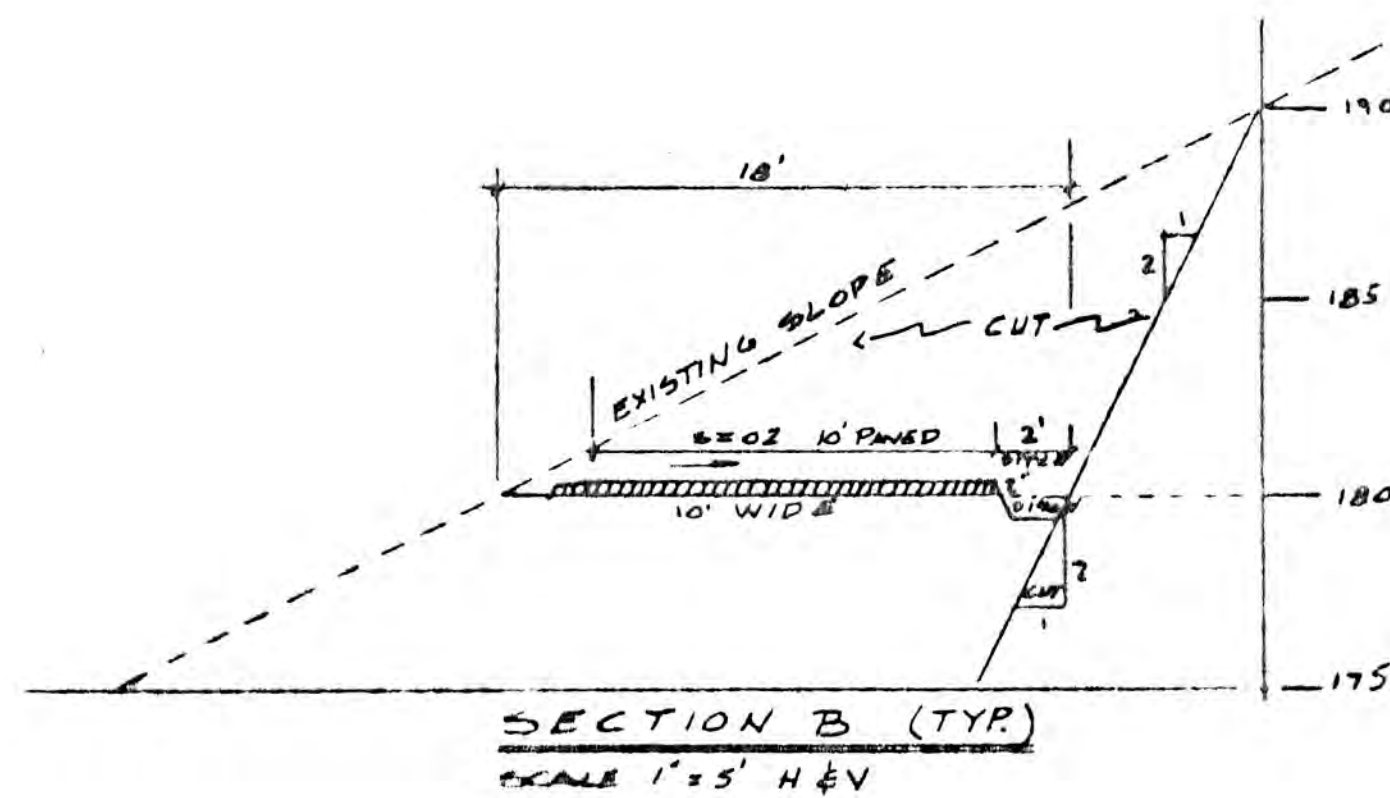
Point	Azimuth	Distance	Northing	Easting	Elevation	Name
3146			1784.524	2998.235	0.000	
3145	N12°32'38"W	22.442	1786.530	2993.361	0.000	
3144	S77°02'05"W	9.993	1784.288	2993.623	0.000	
3143	N12°57'47"W	18.879	1802.686	2979.388	0.000	
3142	N77°03'36"W	14.245	1808.976	2983.268	0.000	
3059	N11°41'52"W	17.215	1805.108	2983.695	282.500	
3060	N78°04'33"W	27.139	1857.715	2857.144	282.500	
3061	N2°27'06"W	17.215	1874.917	2856.406	282.500	
3174	N10°03'40"W	88.146	1981.708	2841.007	0.000	
3150	N9°00'20"W	26.066	1984.581	2837.382	0.000	
3080	N56°06'05"E	48.658	2011.663	2877.886	282.500	
3081	N57°22'22"E	28.066	2028.105	2900.019	282.500	
3082	N58°42'51"E	51.309	2051.750	2943.866	282.500	
3069	N40°22'55"E	113.542	2080.036	3032.271	282.500	
3063	N17°36'23"W	48.077	2085.036	3031.971	282.500	
3064	N2°01'30"W	8.514	2093.524	3036.427	282.500	
3066	N50°41'40"E	87.630	2095.368	3046.427	282.500	
3065	N21°31'40"E	10.880	2265.490	2960.419	282.500	
3067	N28°10'34"W	11.725	2368.848	2905.055	282.500	
3068	S80°01'35"W	14.145	2366.398	2891.123	282.500	
3070	N20°24'26"W	742.038	3061.865	3149.863	282.500	
3071	N42°33'37"W	151.027	3173.106	3047.713	282.500	
3072	N43°23'36"W	103.204	3248.100	2976.815	282.500	
3073	N50°10'54"E	16.406	3256.605	2989.413	282.500	
3074	N11°26'22"E	237.996	3491.874	3036.615	282.500	
3075	N10°08'23"E	280.382	3478.877	3085.977	282.500	
3077	N7°10'23"E	270.243	4036.005	3119.721	282.500	
3162	N19°19'51"E	268.176	4289.061	3208.493	0.000	





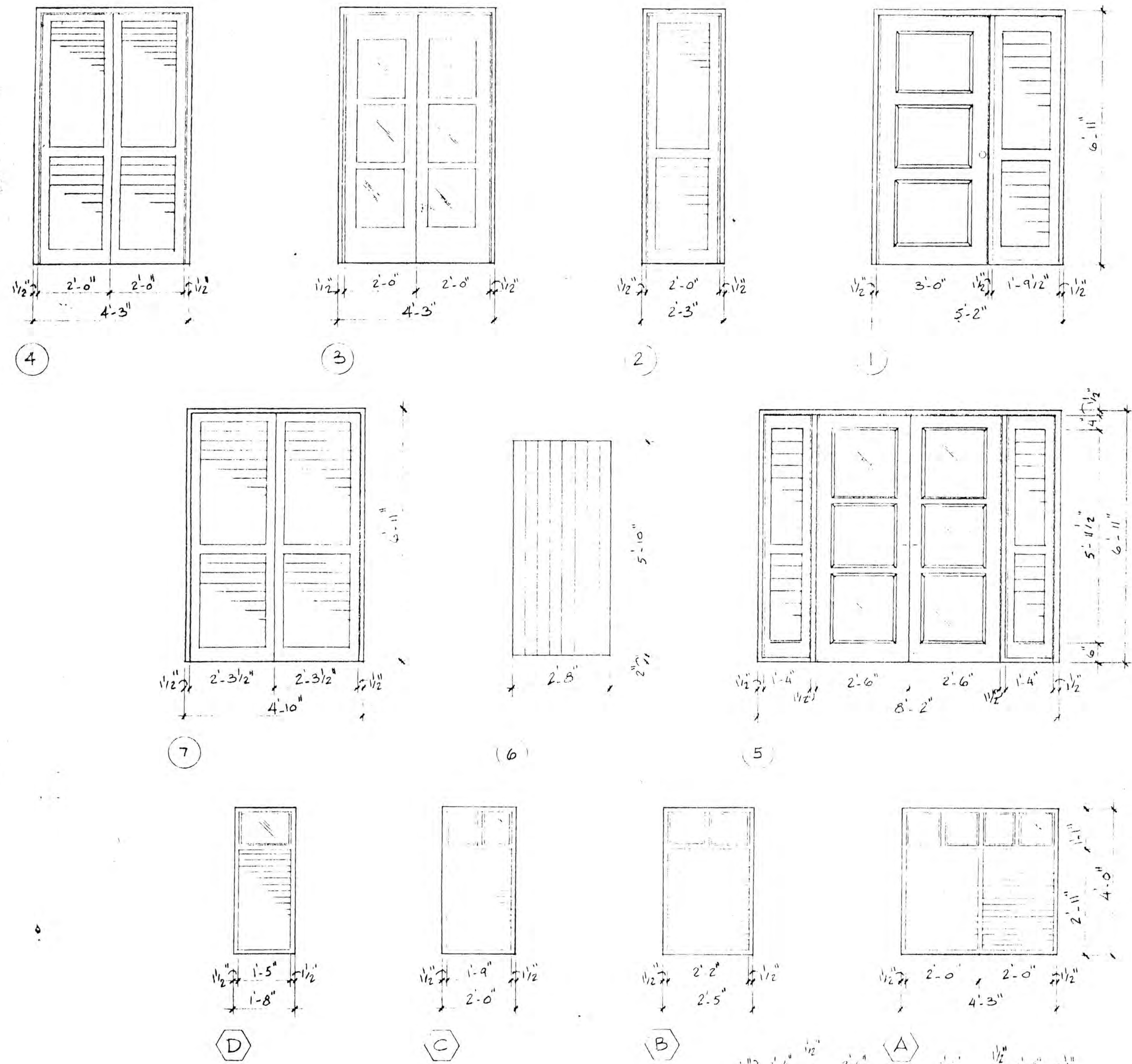
DESIGN DATA

MAIN HOUSE	
WATER CAPACITY	2168 G.S. = 47,520 GAL.
CAPACITY PROVIDED	33,750 "
TYPICAL ONE BEDROOM CONDOMINIUM	
WATER CAPACITY	2840 G.S. = 6140 GAL.
CAPACITY PROVIDED	9312 GAL.
TYPICAL TWO BEDROOM CONDOMINIUM	
WATER CAPACITY	4460 G.S. = 9660 GAL.
CAPACITY PROVIDED	11343 GAL.
TOTAL PARKING REQUIRED	
	43 SPACES
TOTAL PARKING PROVIDED	
	45

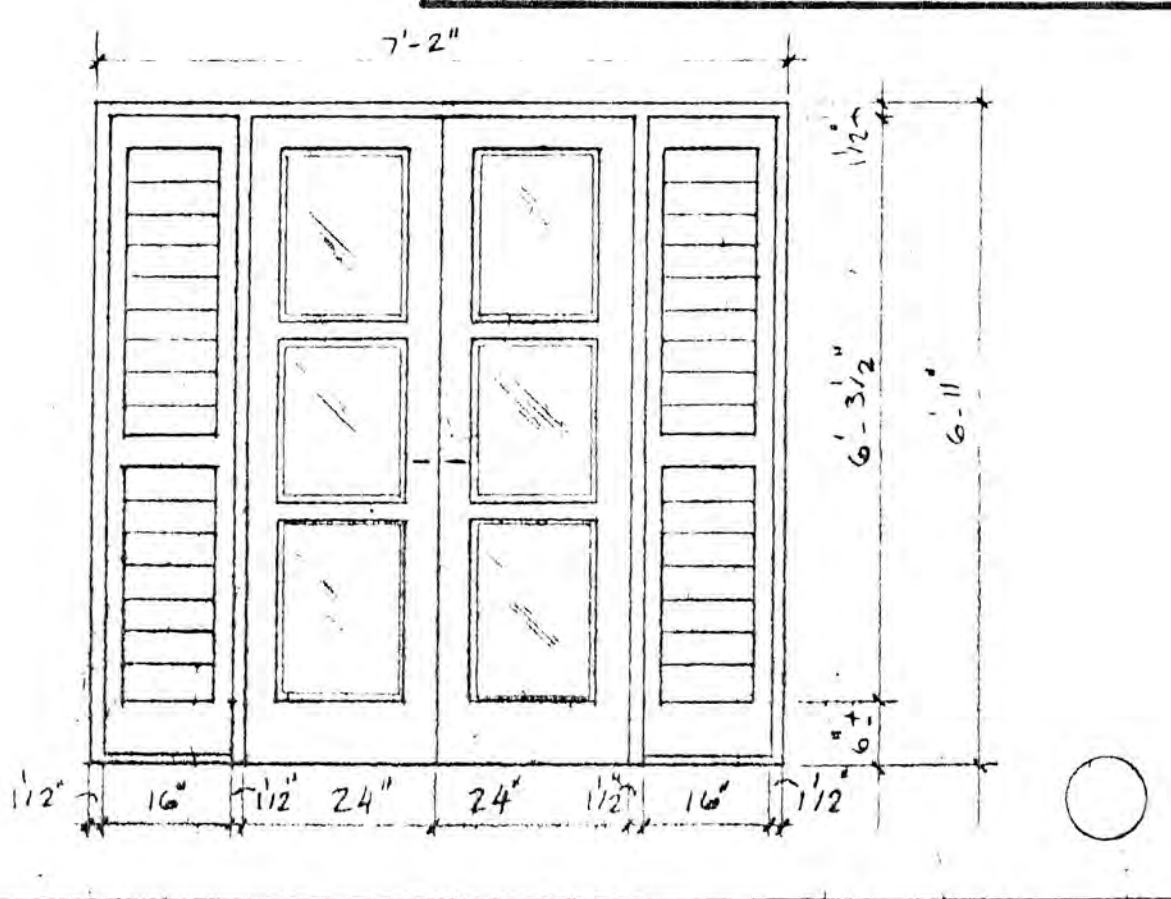
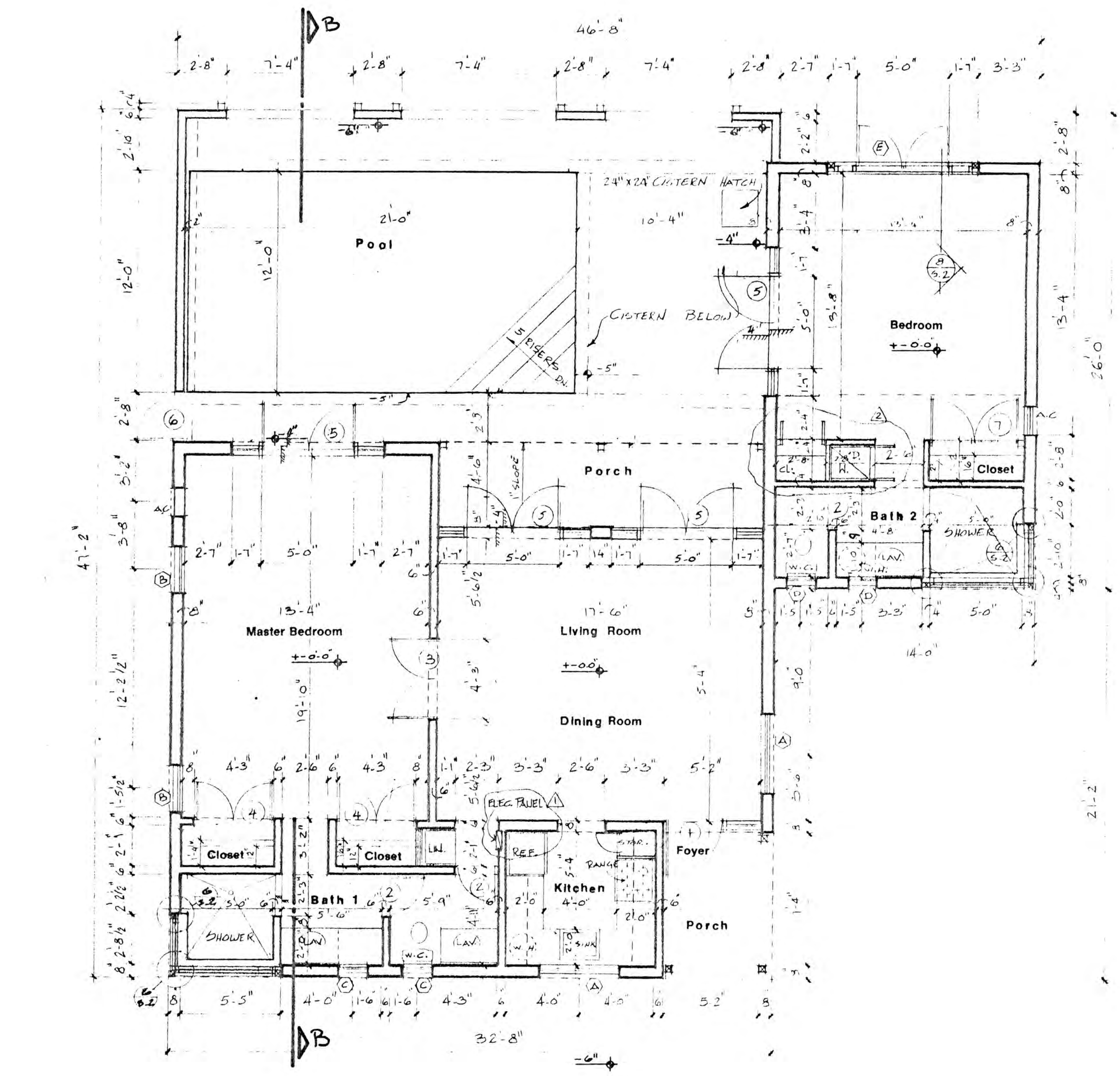
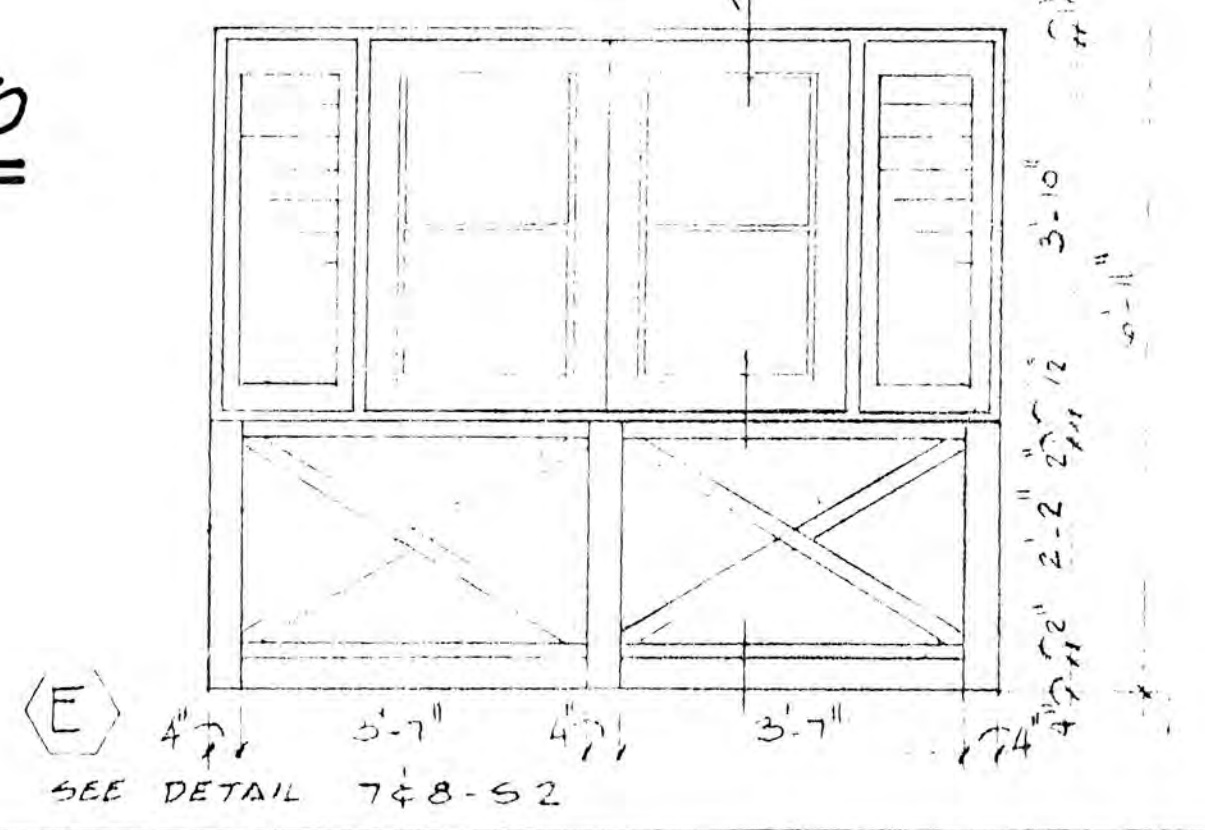


MASTER SITE PLAN
PLOT No. 19A 6.501 AC.
ESTATE THURNERS BAY
EAST END QUARTER "B"

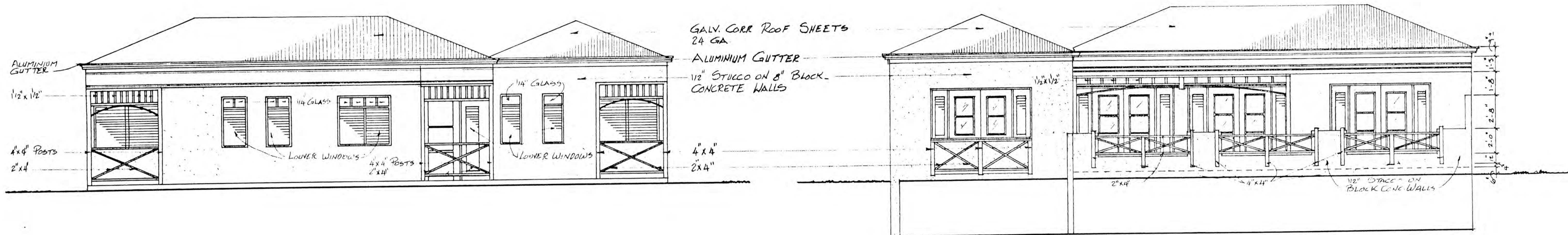
CARIBBEAN CONSTRUCTION SERVICES AND ASSOCIATES	
DATE: 1" = 40'	ISSUED BY: M.H.L.
VILLA MADELEINE	
JOB No. 1232, 1235	



DOOR & WINDOW ELEVATIONS
SCALE 1/2" = 1'-0"



CARIBBEAN CONSTRUCTION SERVICES & ASSOCIATES	
SCALE 1/4" = 1'-0"	APPROVED BY
DATE 6-29-1987	DESIGNED BY M.A. 1/1
	REVISION 1 2/3/87
VILLA MADELEINE	
FLOOR PLAN	
	DRAWING NUMBER A-4

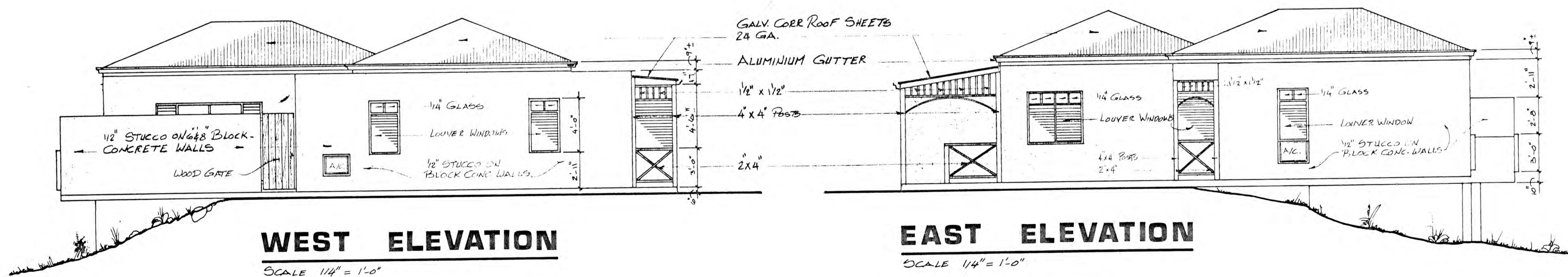


SOUTH ELEVATION

SCALE 1/4" = 1'-0"

NORTH ELEVATION

SCALE 1/4" = 1'-0"

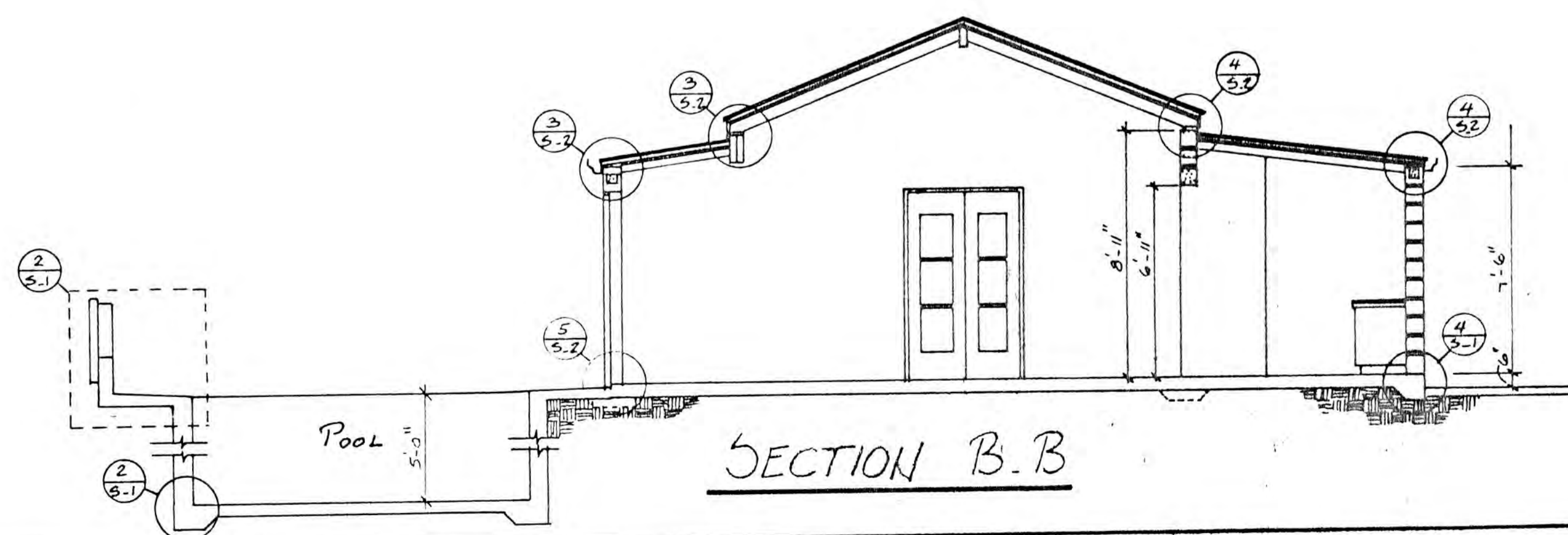


WEST ELEVATION

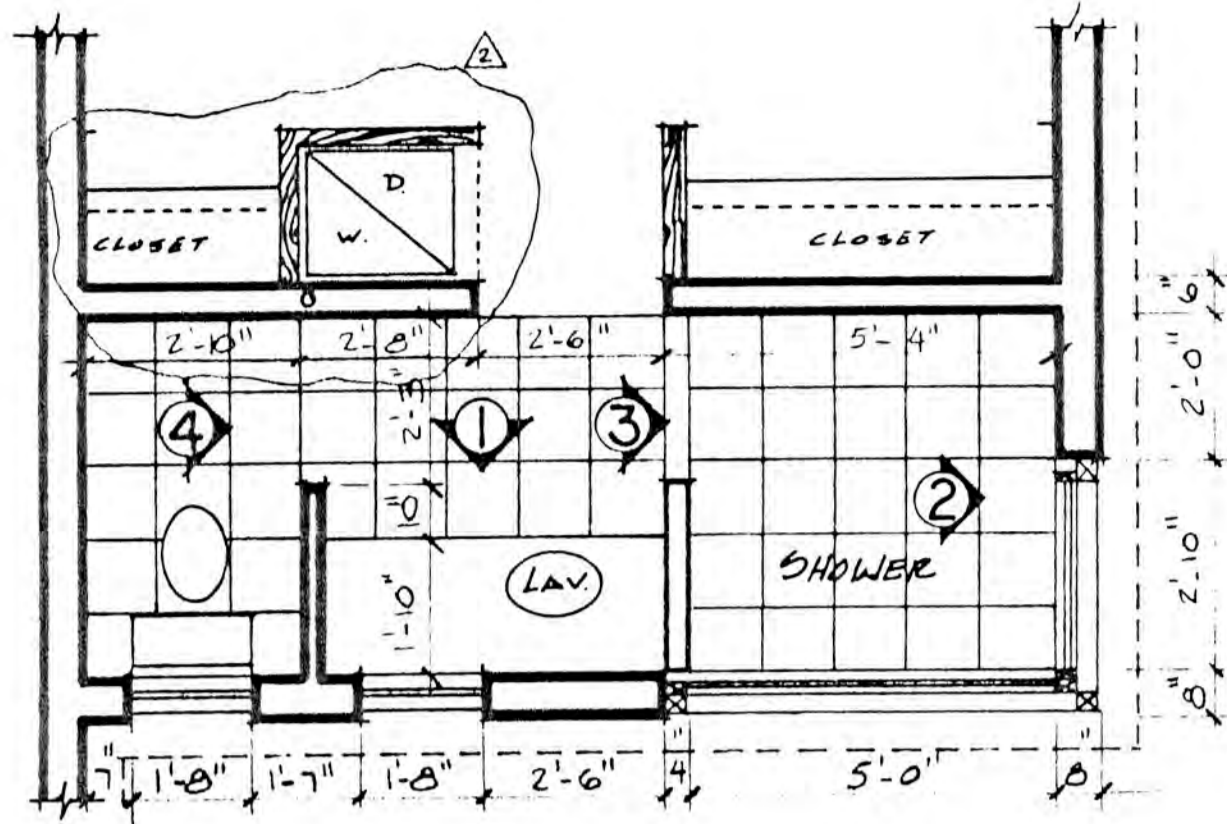
SCALE 1/4" = 1'-0"

EAST ELEVATION

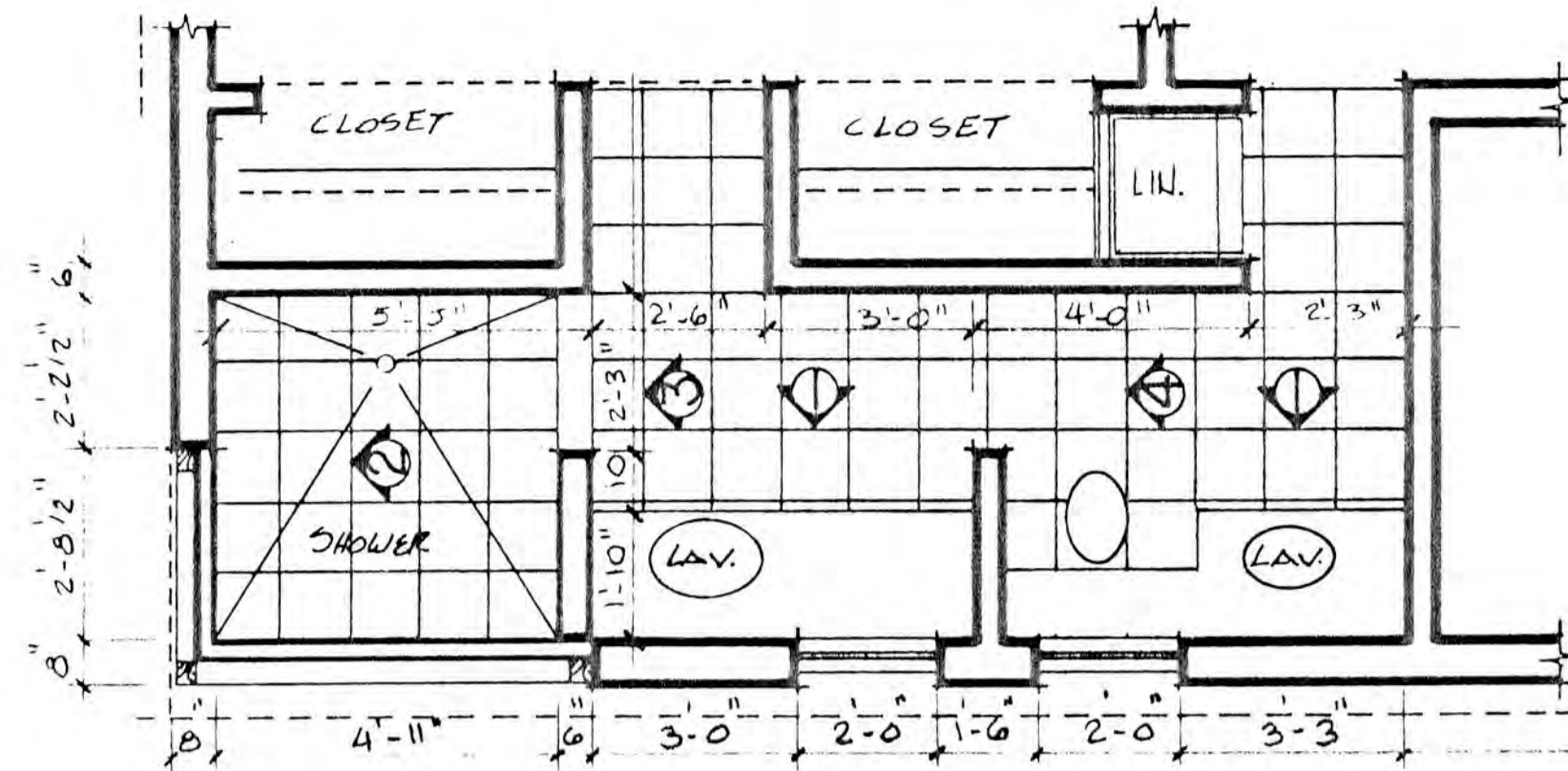
SCALE 1/4" = 1'-0"



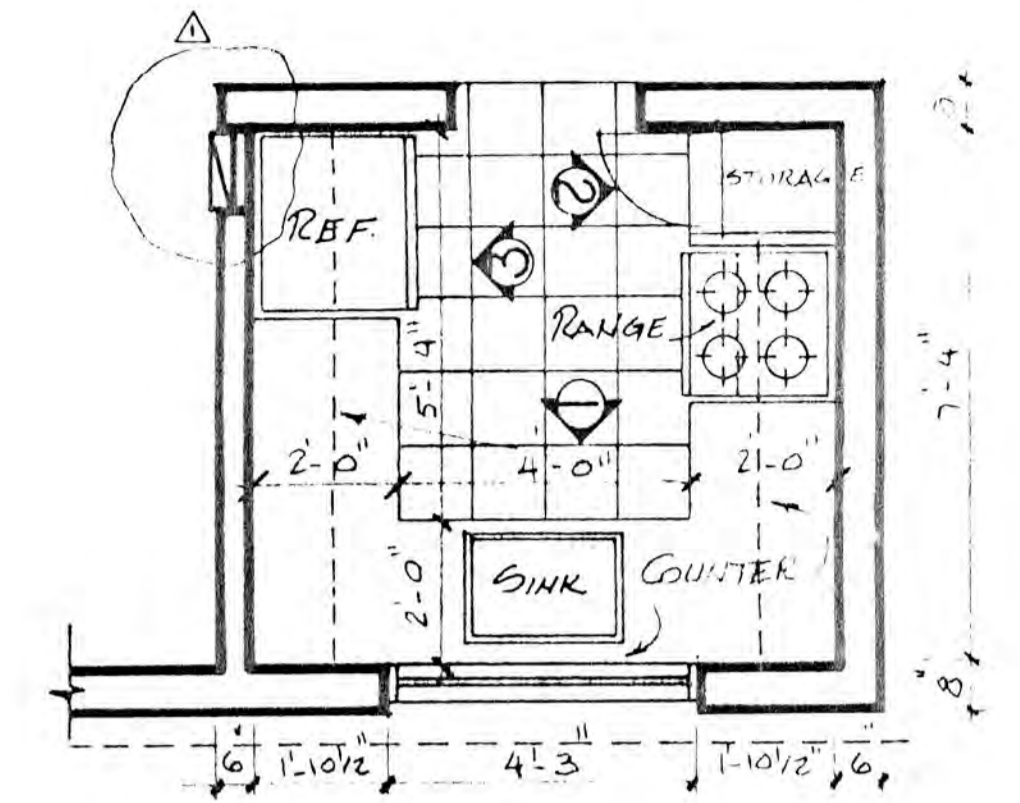
CARIBBEAN CONSTRUCTION SERVICES & ASSOCIATES			
SCALE 1/4" = 1'-0"	APPROVED BY	DESIGNED BY	M.A.M.
DATE 6.29.1987		RECORDED	
VILLA MADELEINE			
ELEVATIONS			A-5



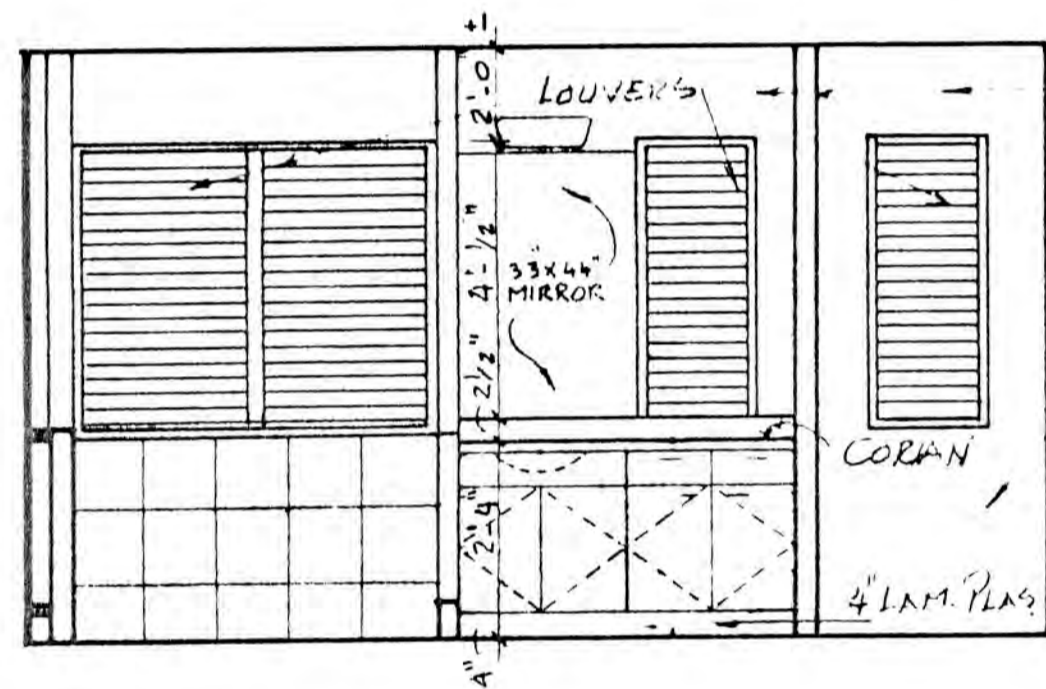
BATHROOM 2 FLOOR PLAN
SCALE 3/8" = 1'-0"



BATHROOM 1 FLOOR PLAN
SCALE 3/8" = 1'-0"

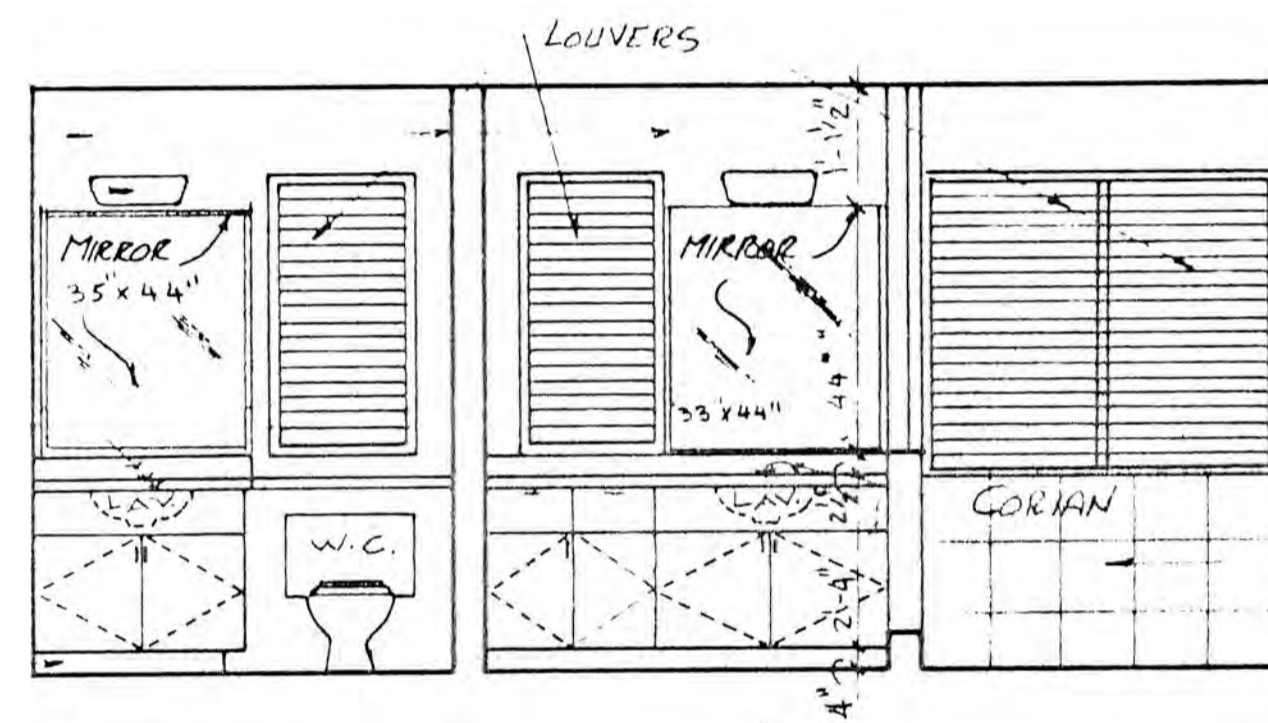


KITCHEN FLOOR PLAN
SCALE 3/8" = 1'-0"



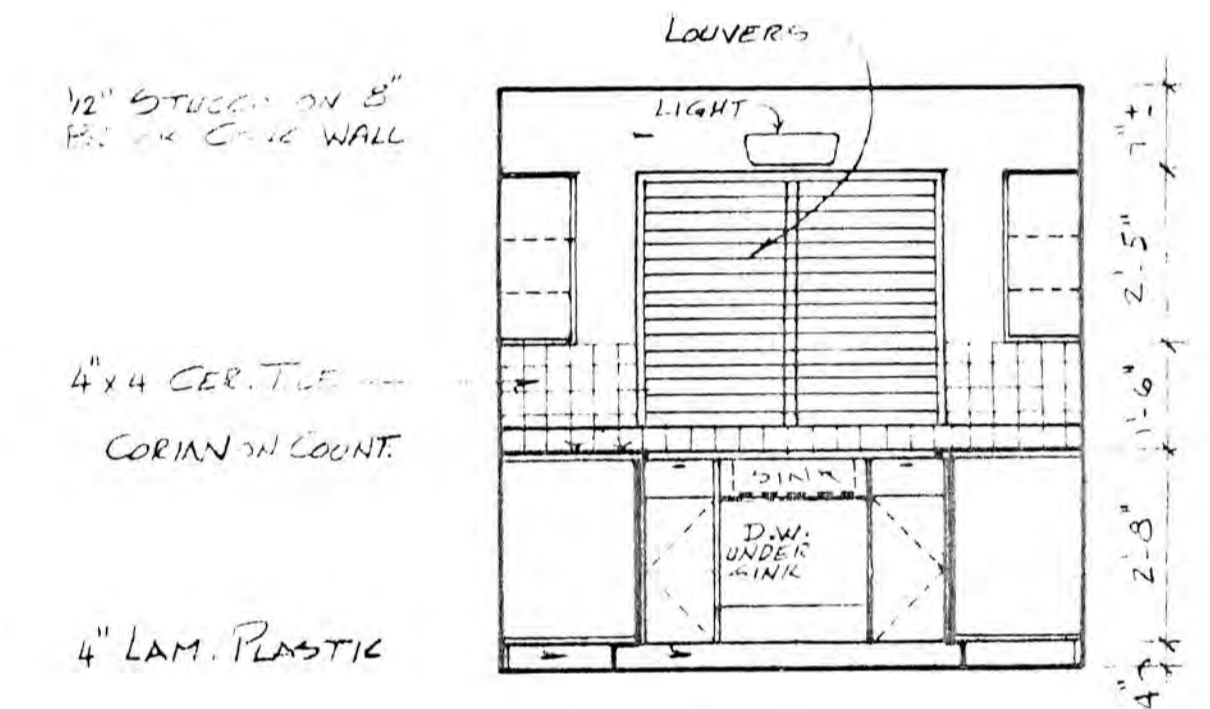
1 ELEVATION
SCALE 3/8" = 1'-0"

1/2" STUCCO ON 8" BLOCK-
CONCRETE WALLS
LIGHT-
CORIAN
4" LAM. PLASTIC



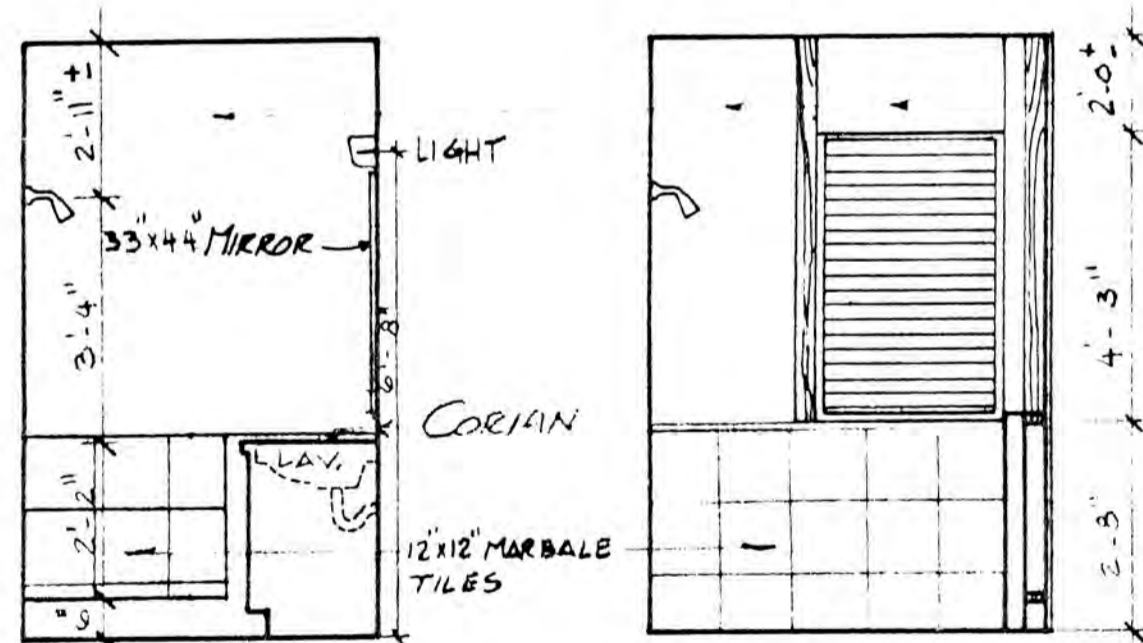
1 ELEVATION
SCALE 3/8" = 1'-0"

12"x12" MARBALE TILES

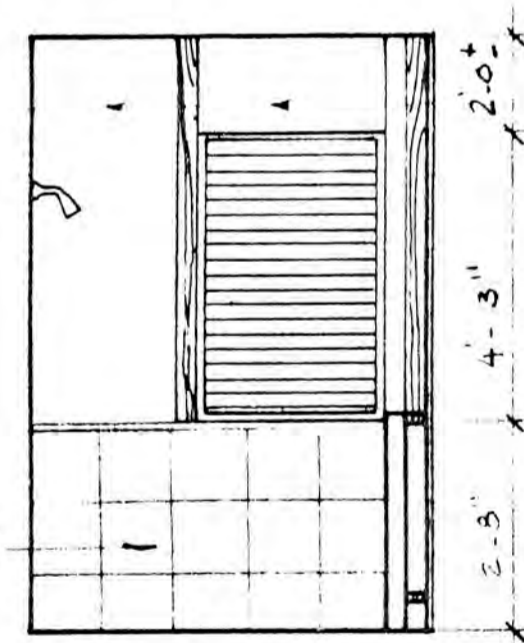


1 ELEVATION
SCALE 3/8" = 1'-0"

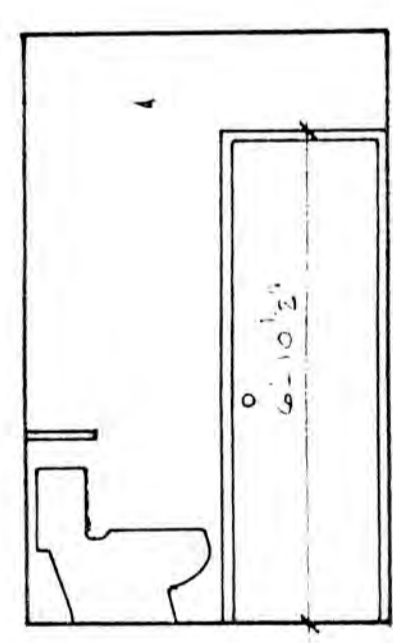
1/2" STUCCO ON 8"
BLOCK CONCRETE WALL
4"x4" CER. TILE
CORIAN IN COUNT.
4" LAM. PLASTIC



3 ELEVATION
SCALE 3/8" = 1'-0"

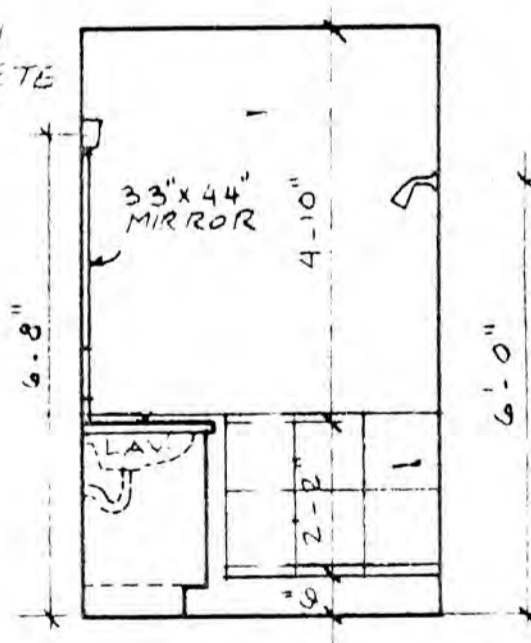


2 ELEVATION
SCALE 3/8" = 1'-0"



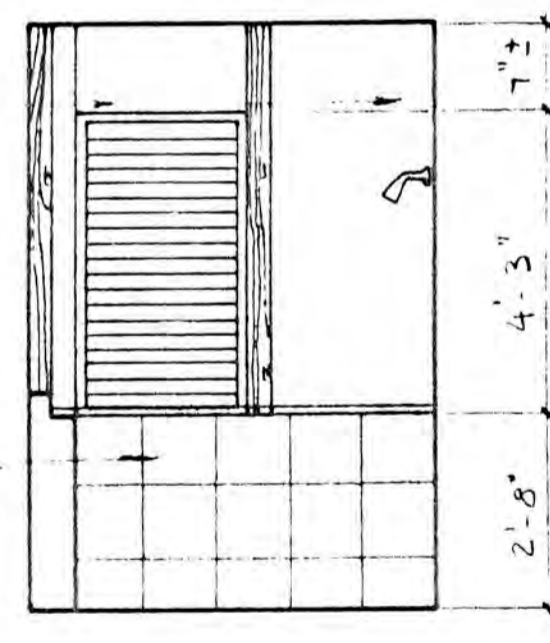
4 ELEVATION
SCALE 3/8" = 1'-0"

1/2" STUCCO ON
BLOCK & CONCRETE
WALLS
CORIAN

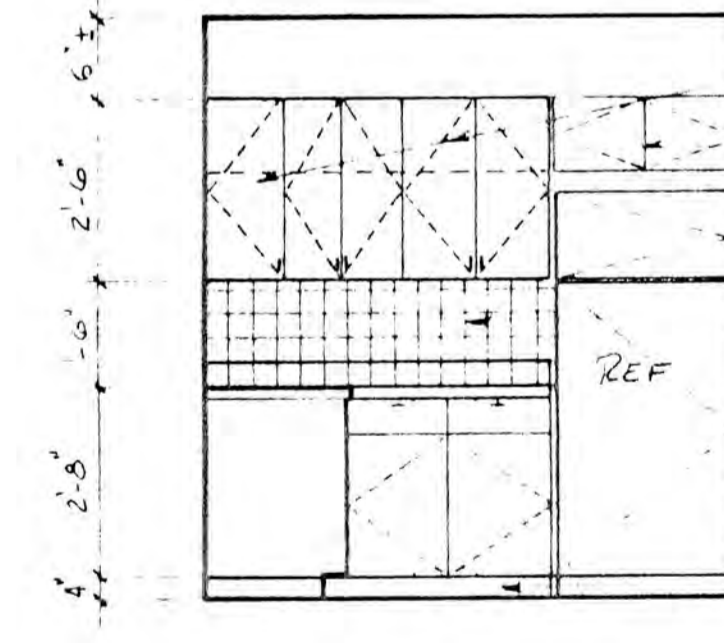


3 ELEVATION
SCALE 3/8" = 1'-0"

12"x12" MARBALE
TILES

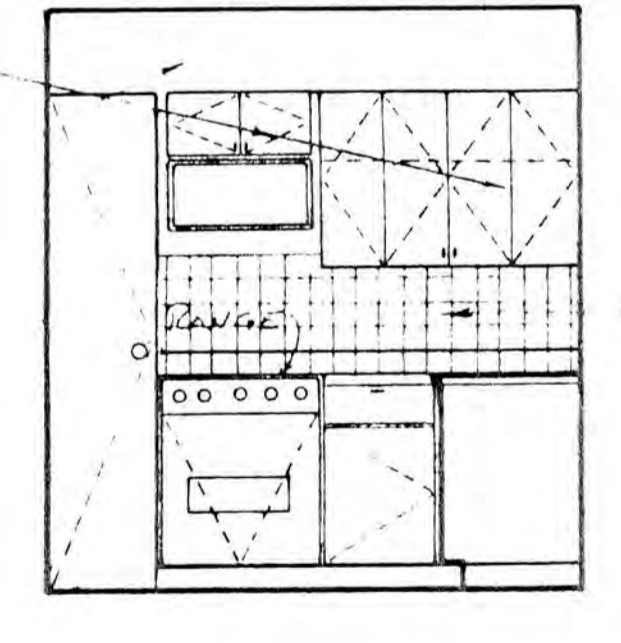


2 ELEVATION
SCALE 3/8" = 1'-0"



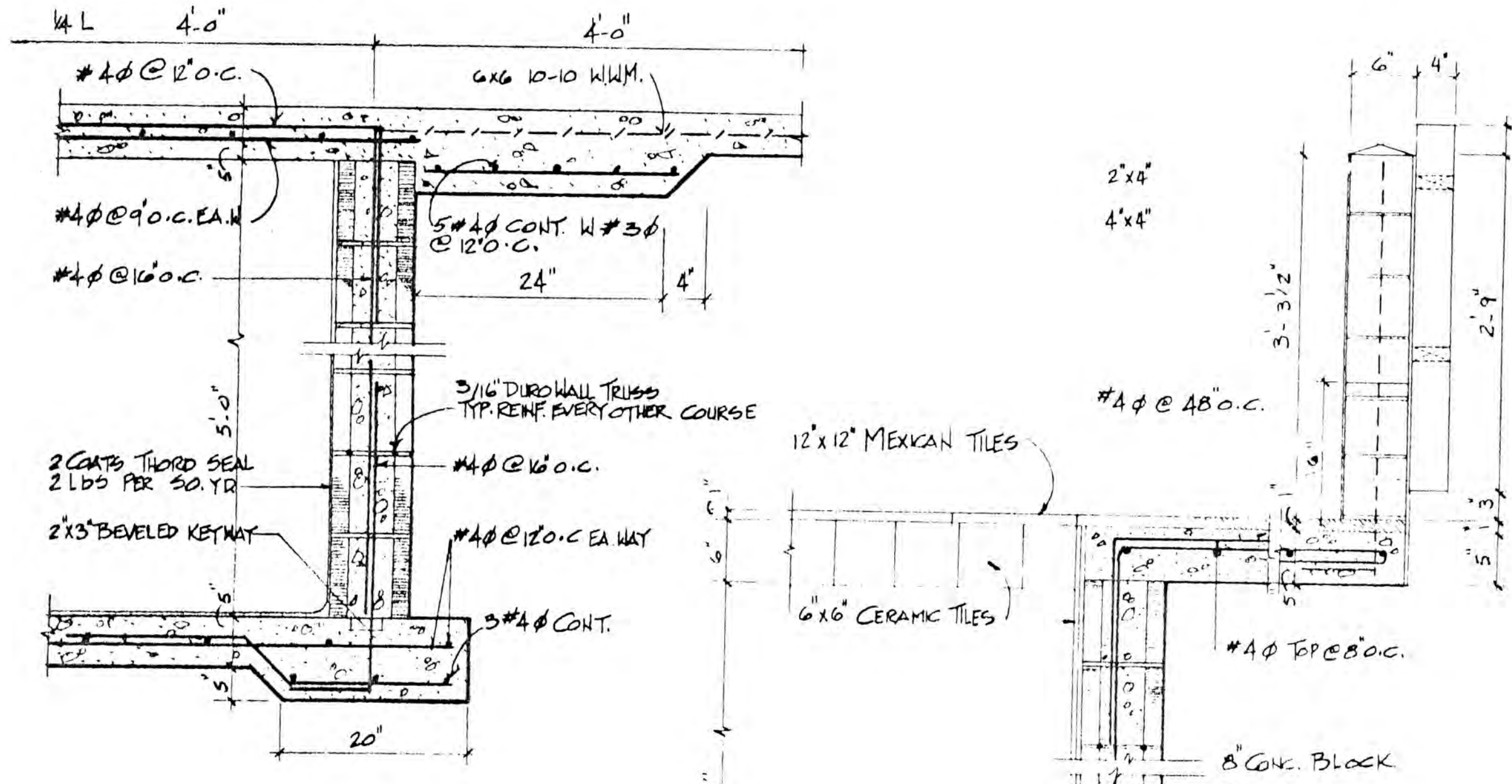
3 ELEVATION
SCALE 3/8" = 1'-0"

CABINETS
1/2" STUCCO ON 8"
BLOCK WALLS
4"x4" CER. TILE
LAM. PLASTIC

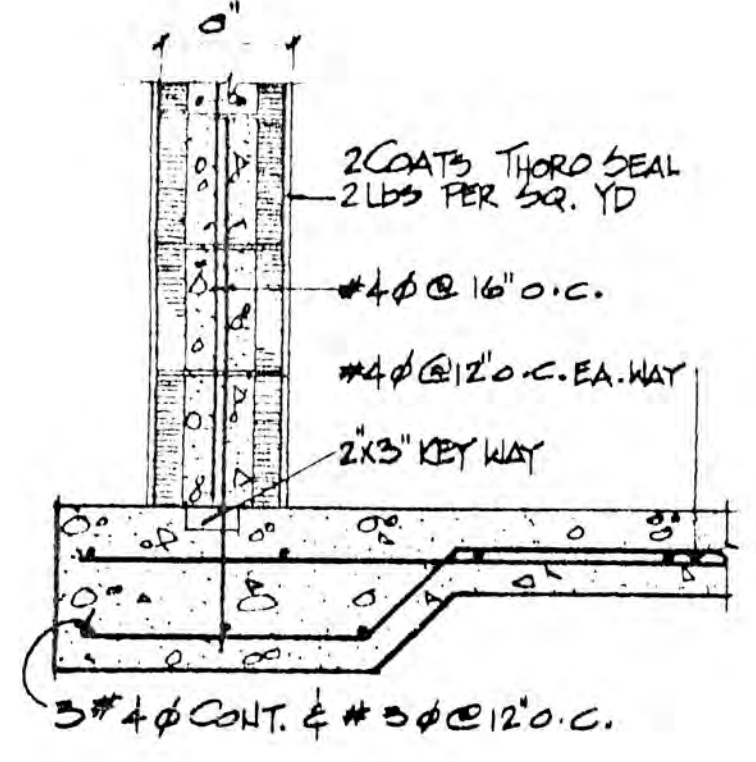


2 ELEVATION
SCALE 3/8" = 1'-0"

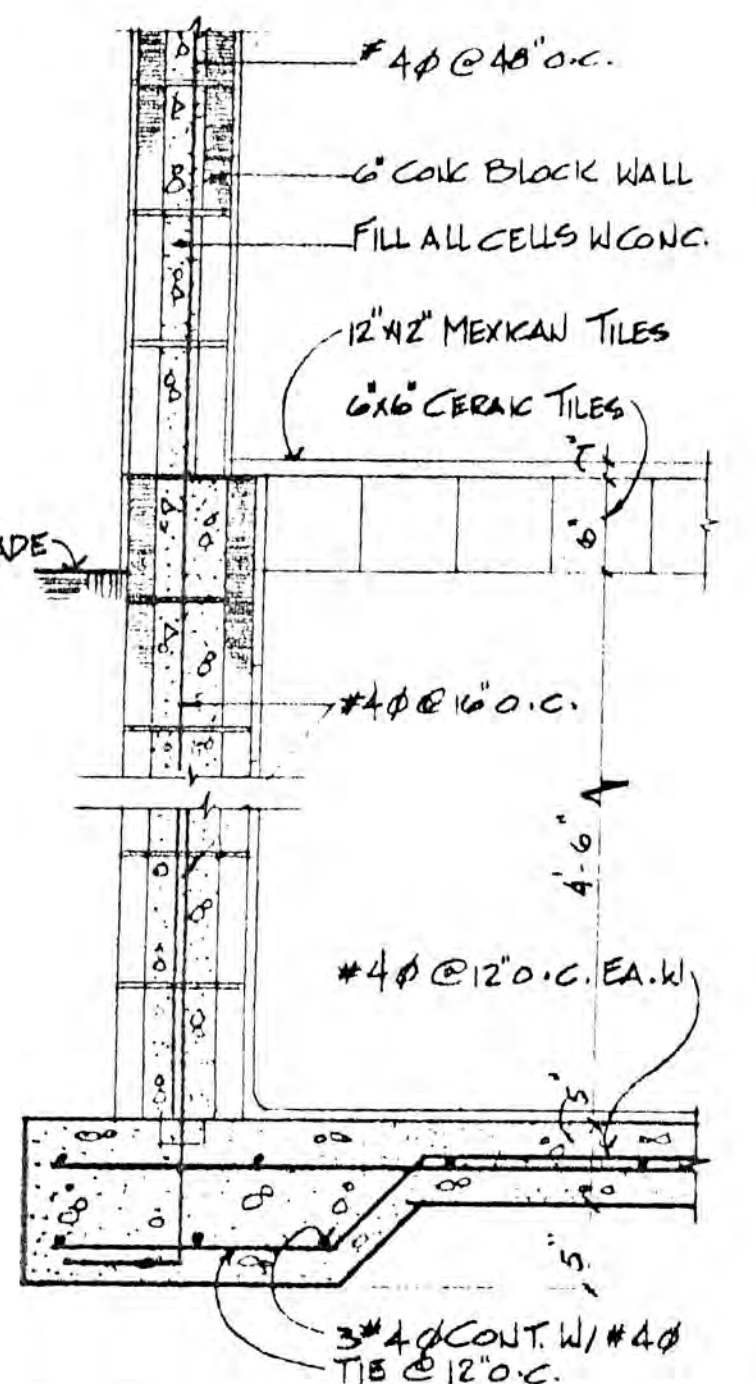
4"x4" CER. TILE



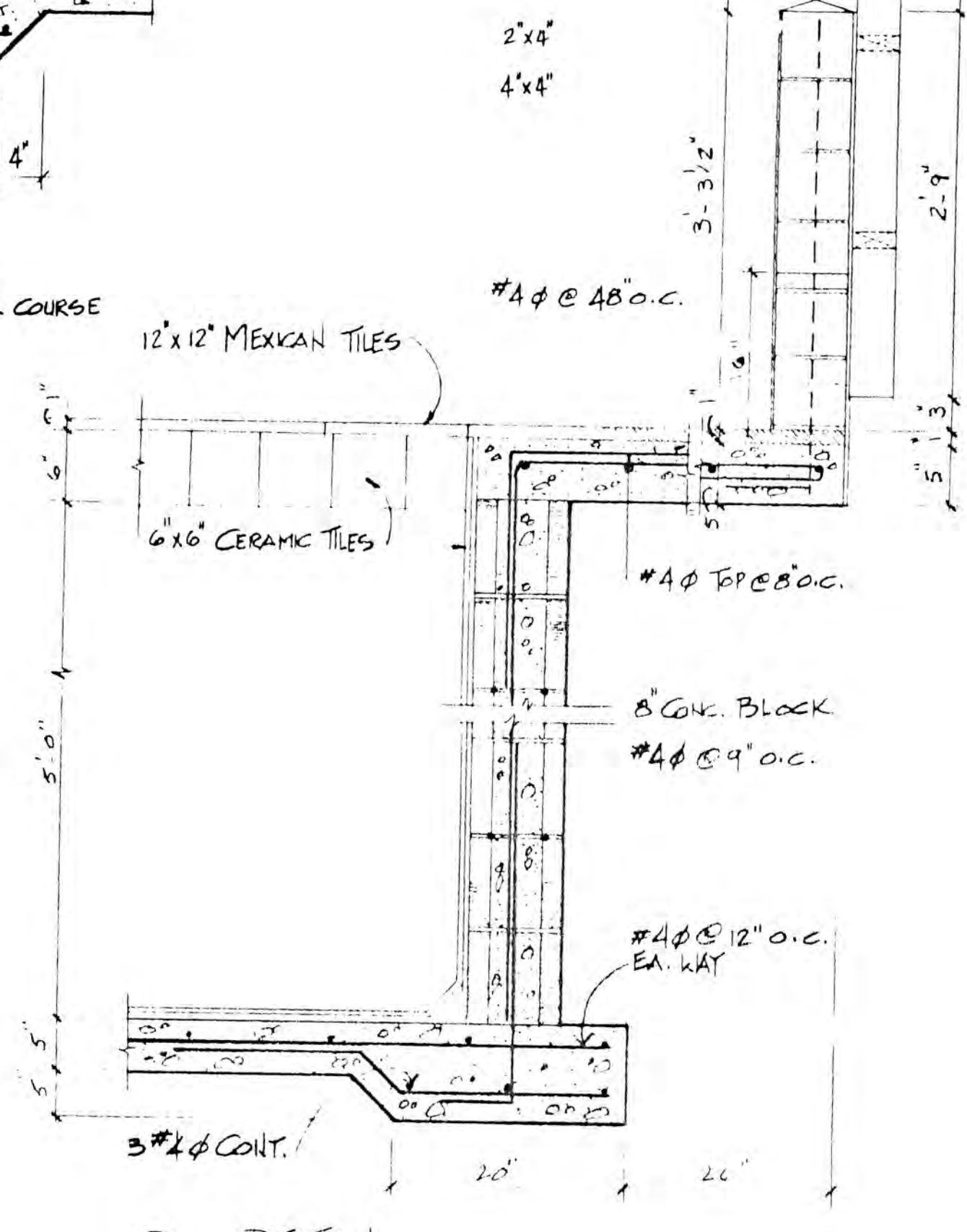
3 DETAIL
SCALE 1" = 1'-0"



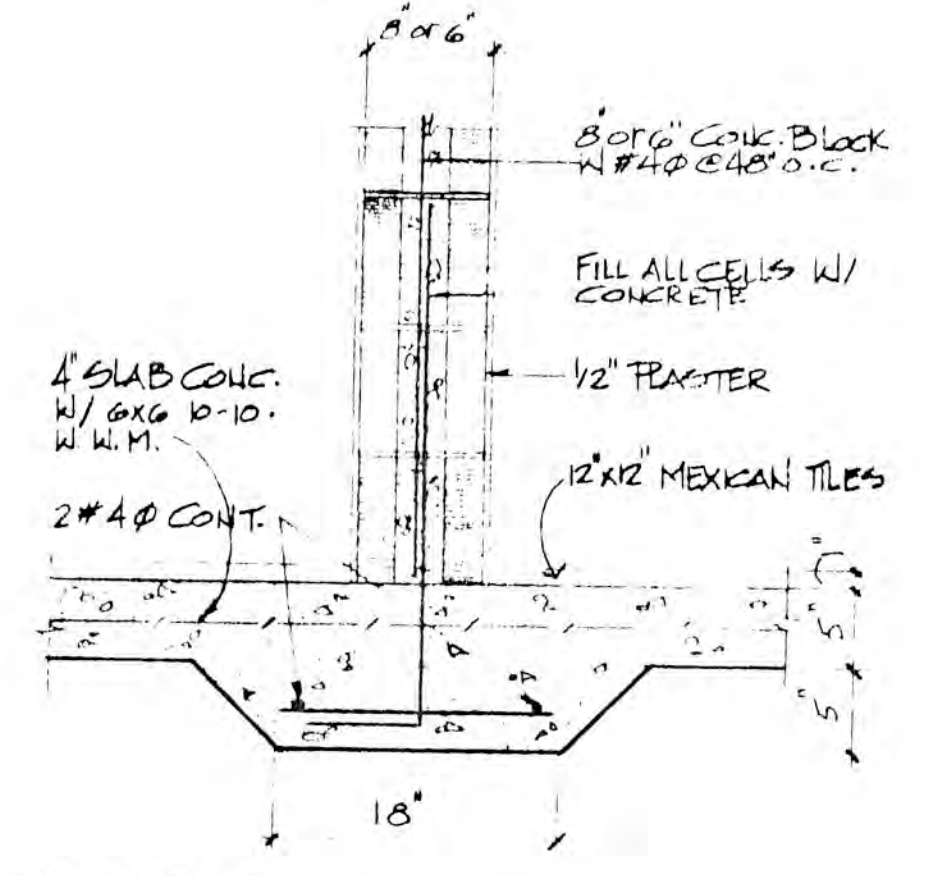
4 DETAIL
SCALE 1" = 1'-0"



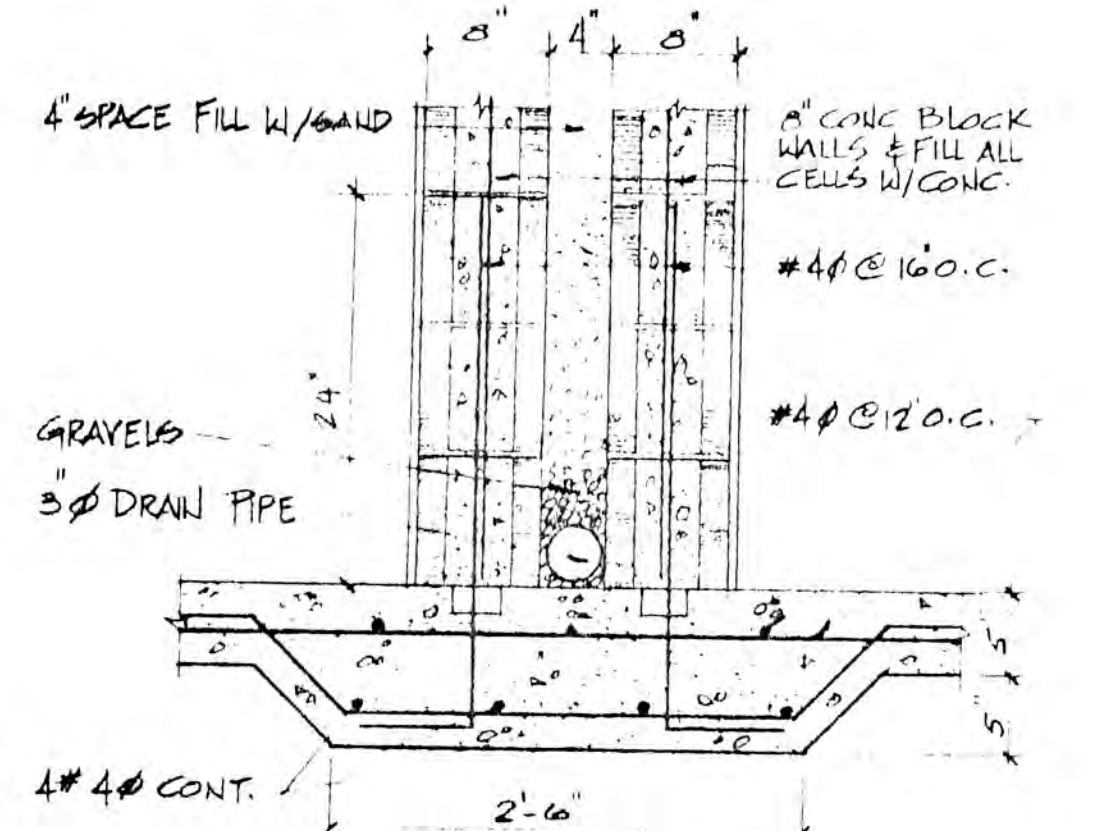
5 DETAIL
SCALE 1" = 1'-0"



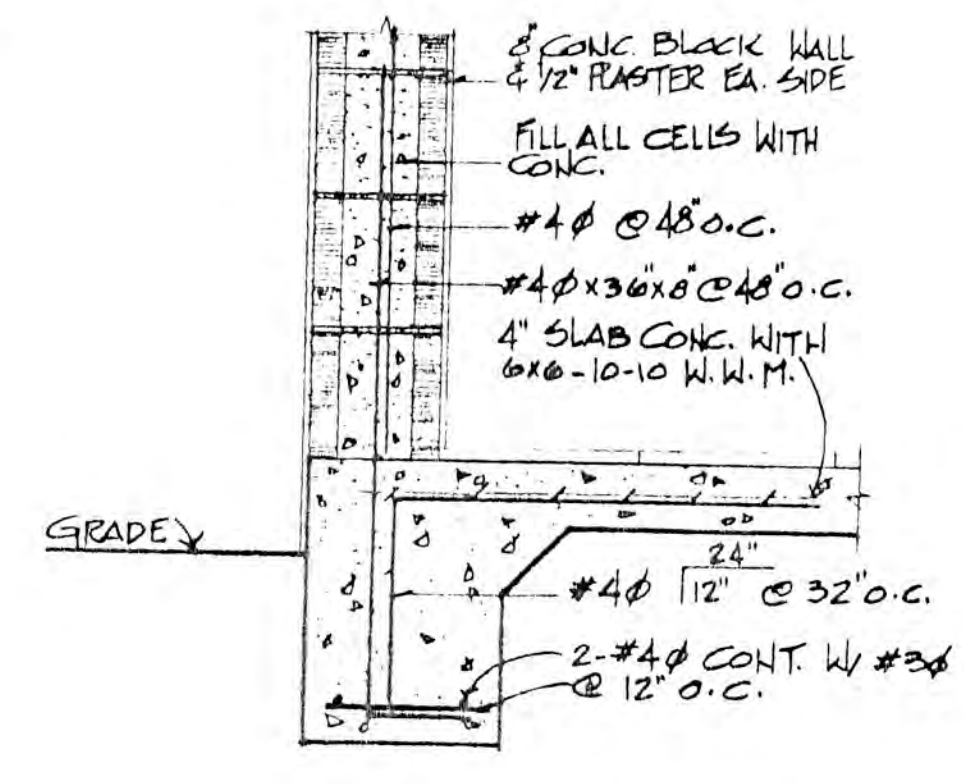
2 DETAIL
SCALE 1" = 1'-0"



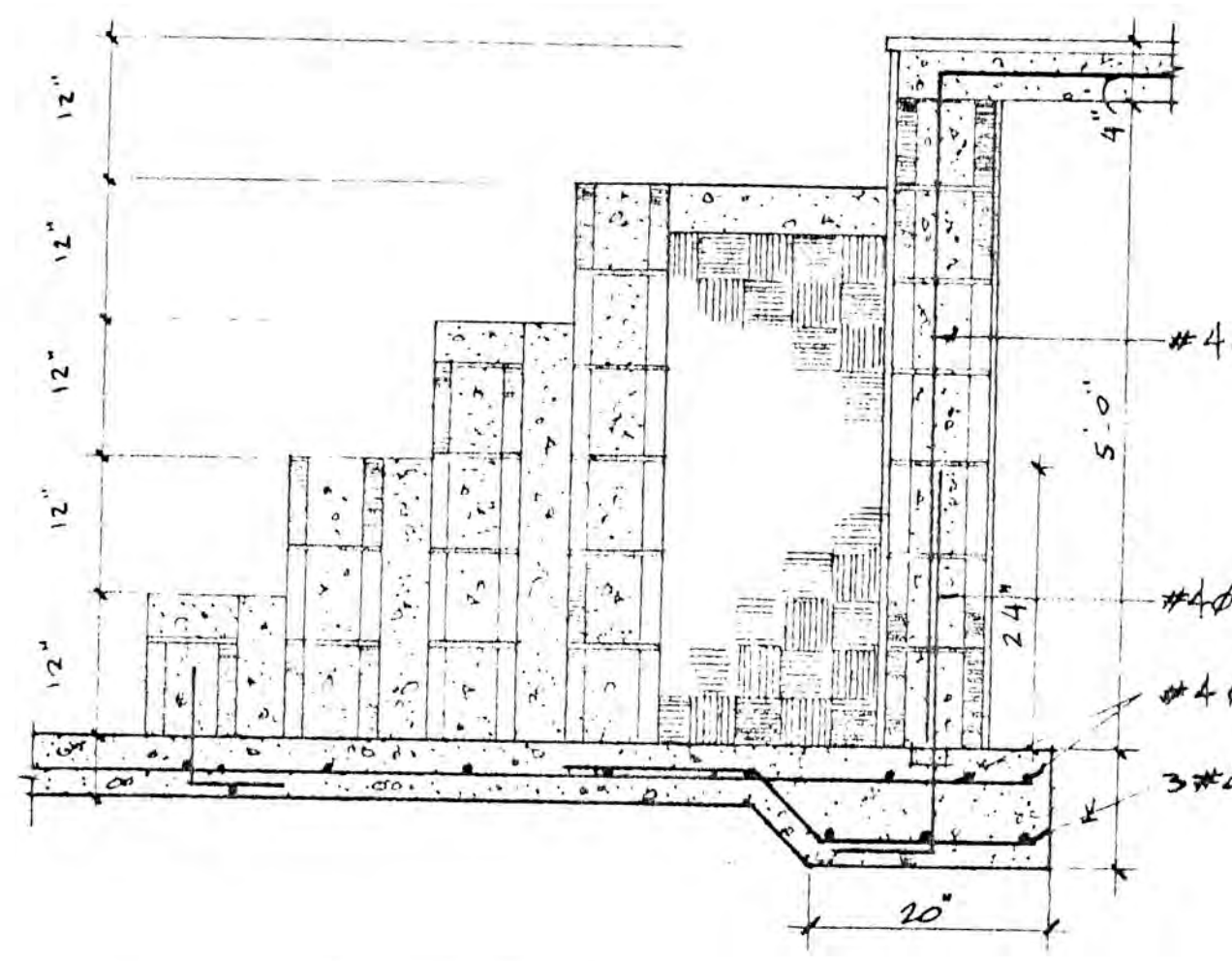
6 DETAIL
SCALE 1" = 1'-0"



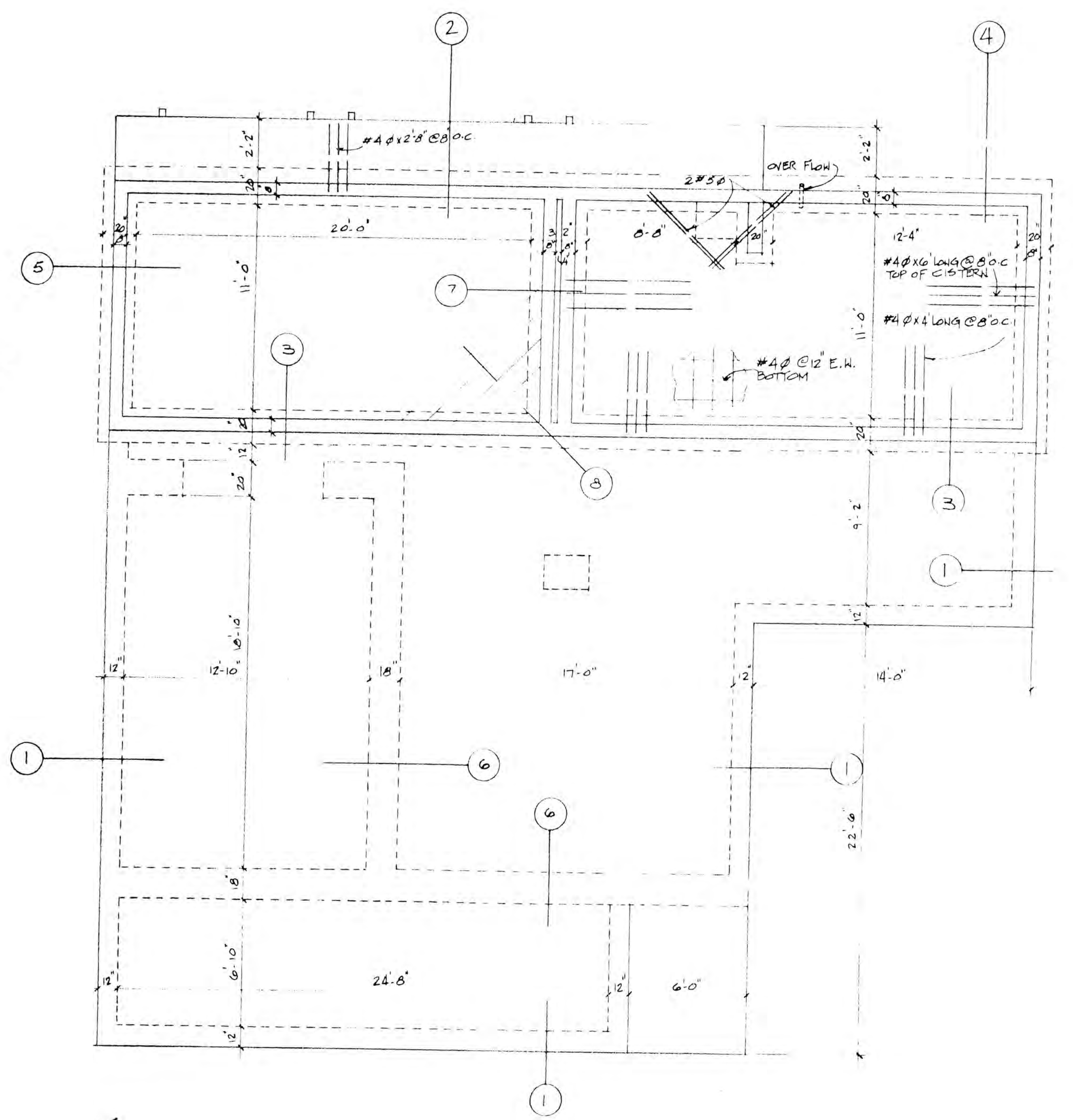
7 DETAIL
SCALE 1" = 1'-0"



1 DETAIL
SCALE 1" = 1'-0"



8 DETAIL
SCALE 1" = 1'-0"



FOUNDATION PLAN
SCALE 1/4" = 1'-0"

CARIBBEAN CONSTRUCTION SERVICES AND ASSOCIATES
 47 Mizzen Court, Gallows Bay, St. Croix, USVI. Tel. (809) 773-5011
 00820

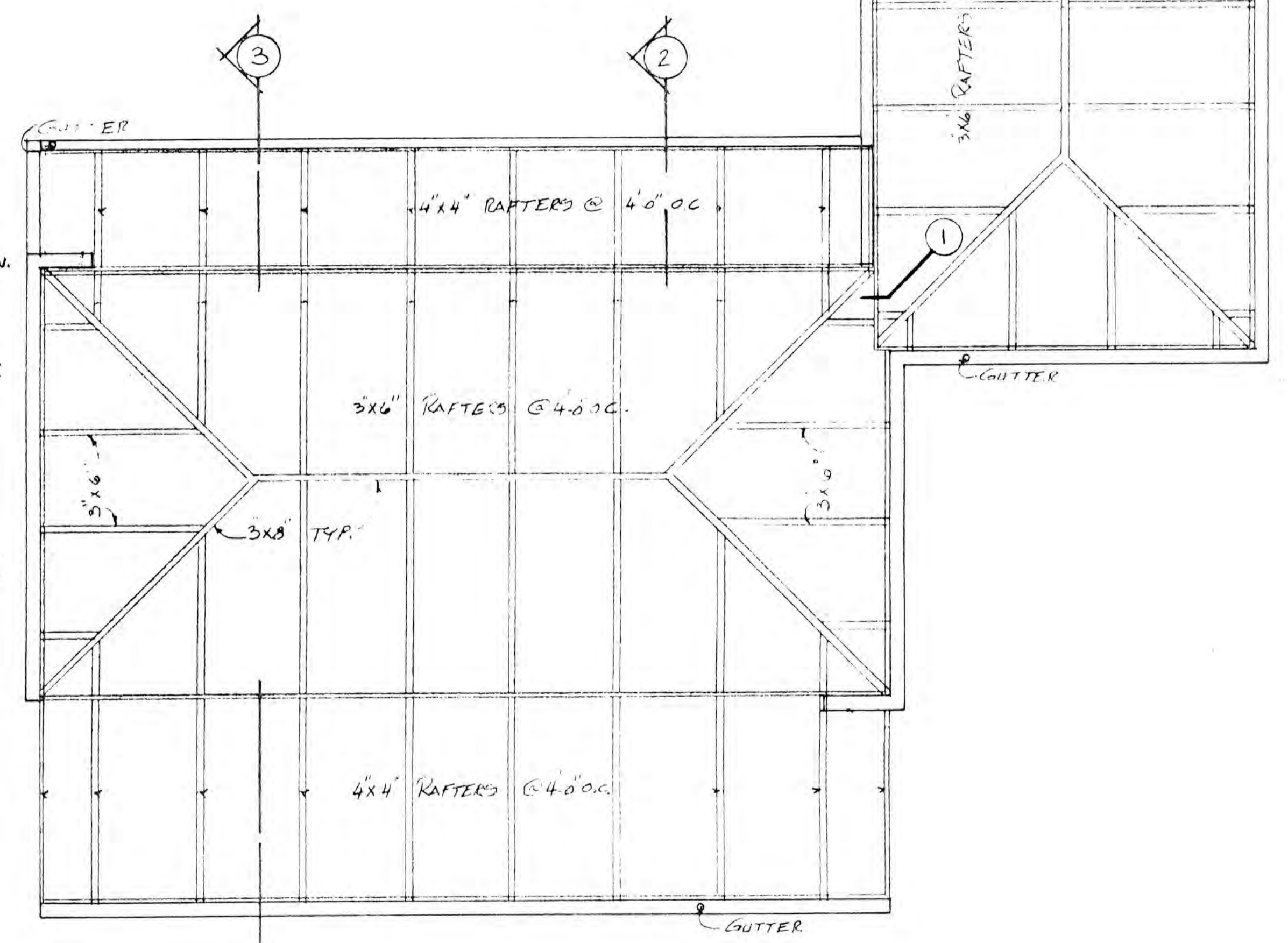
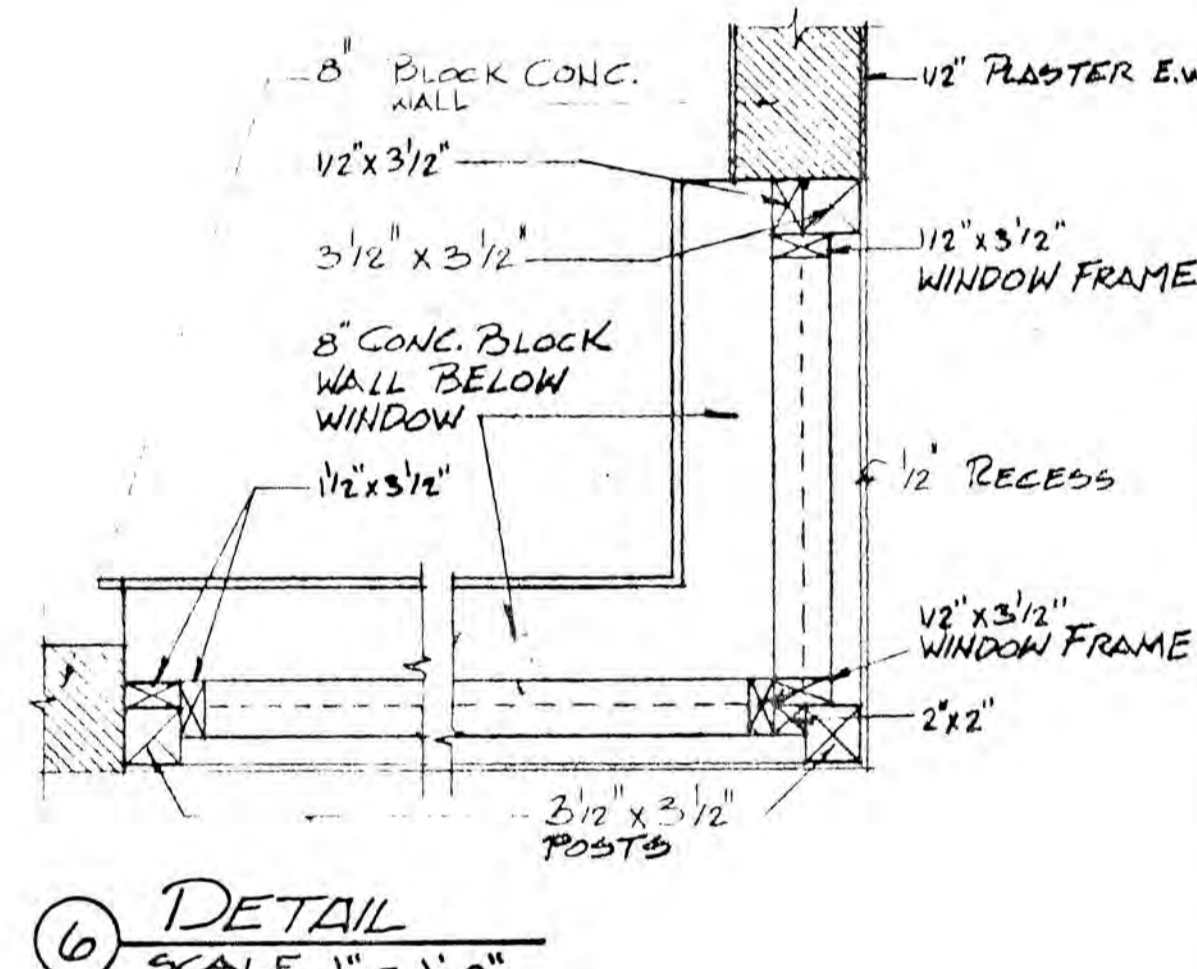
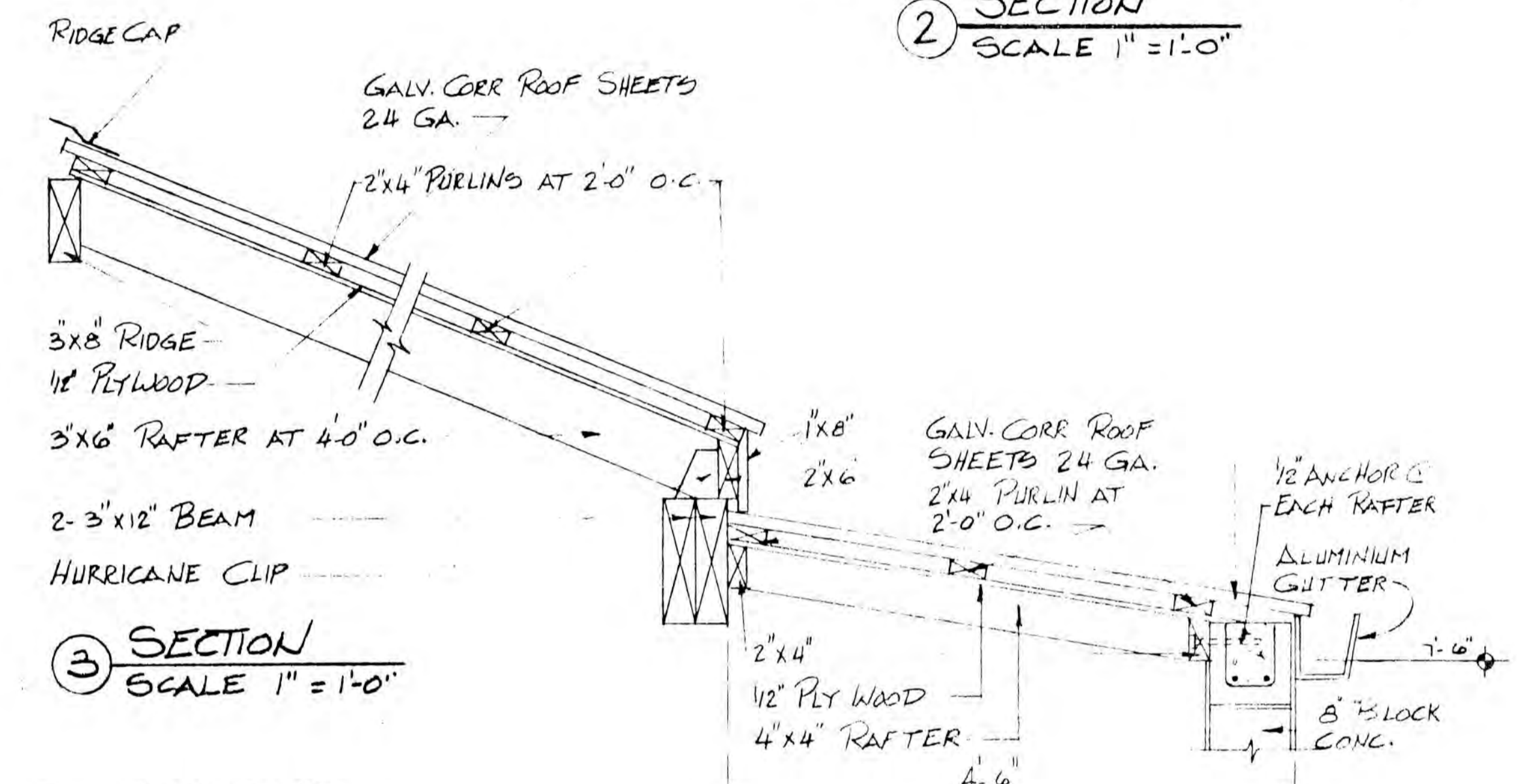
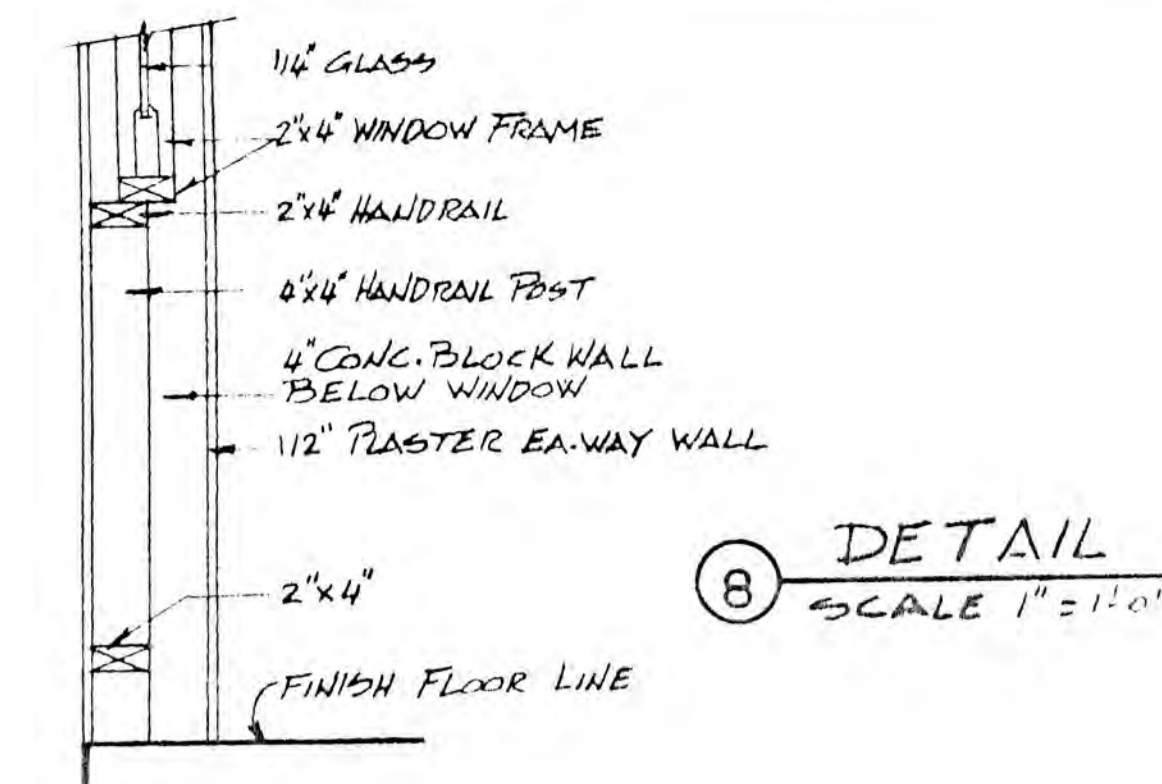
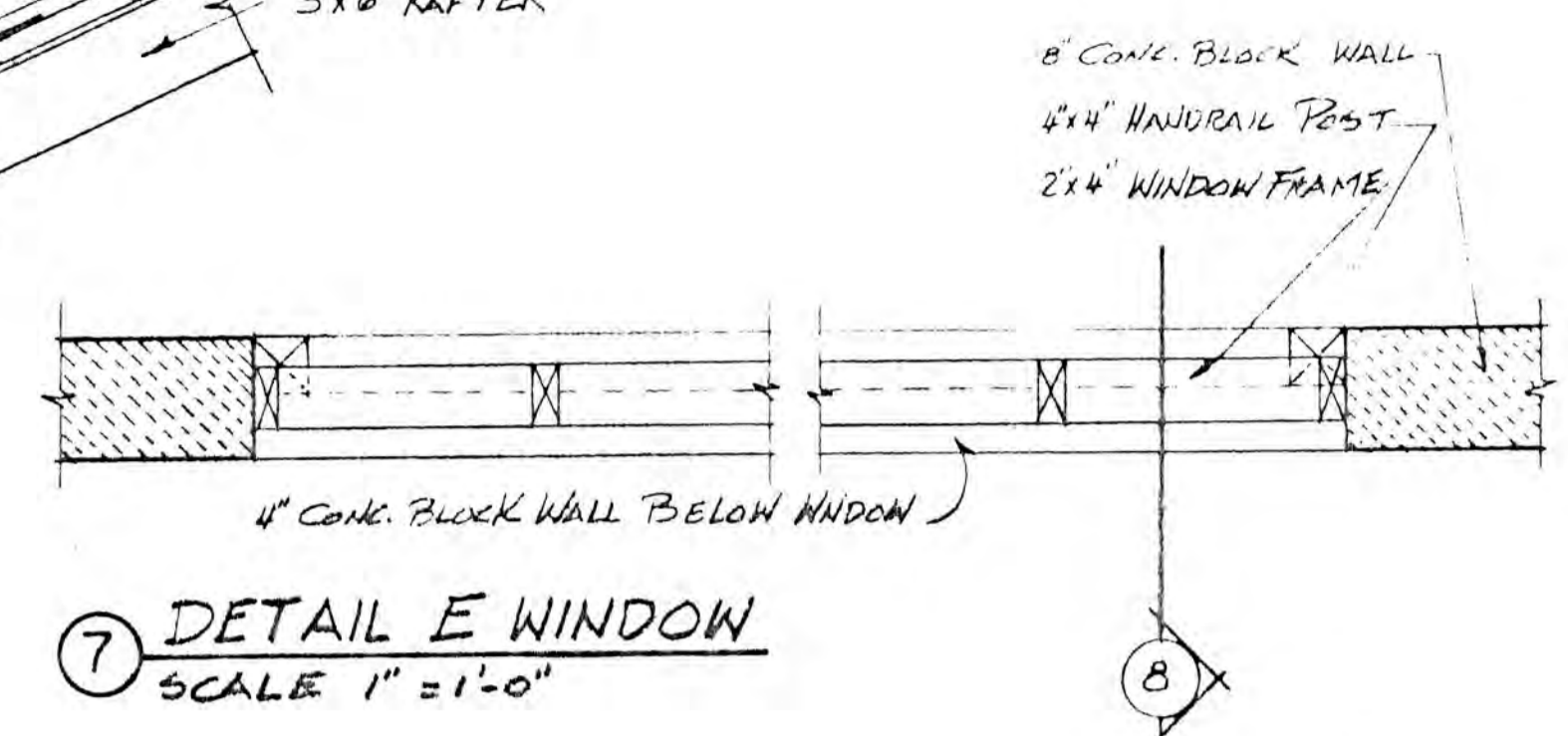
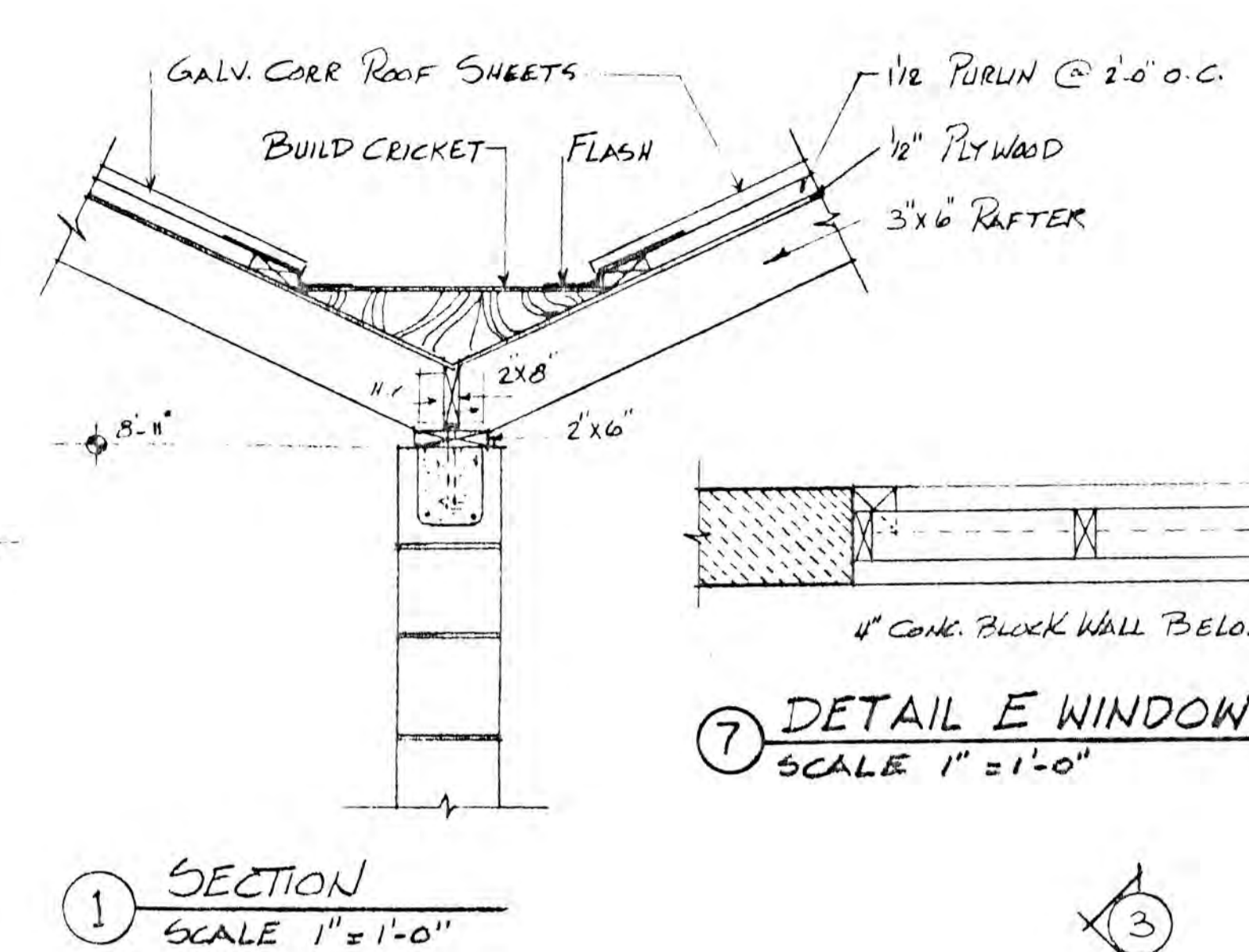
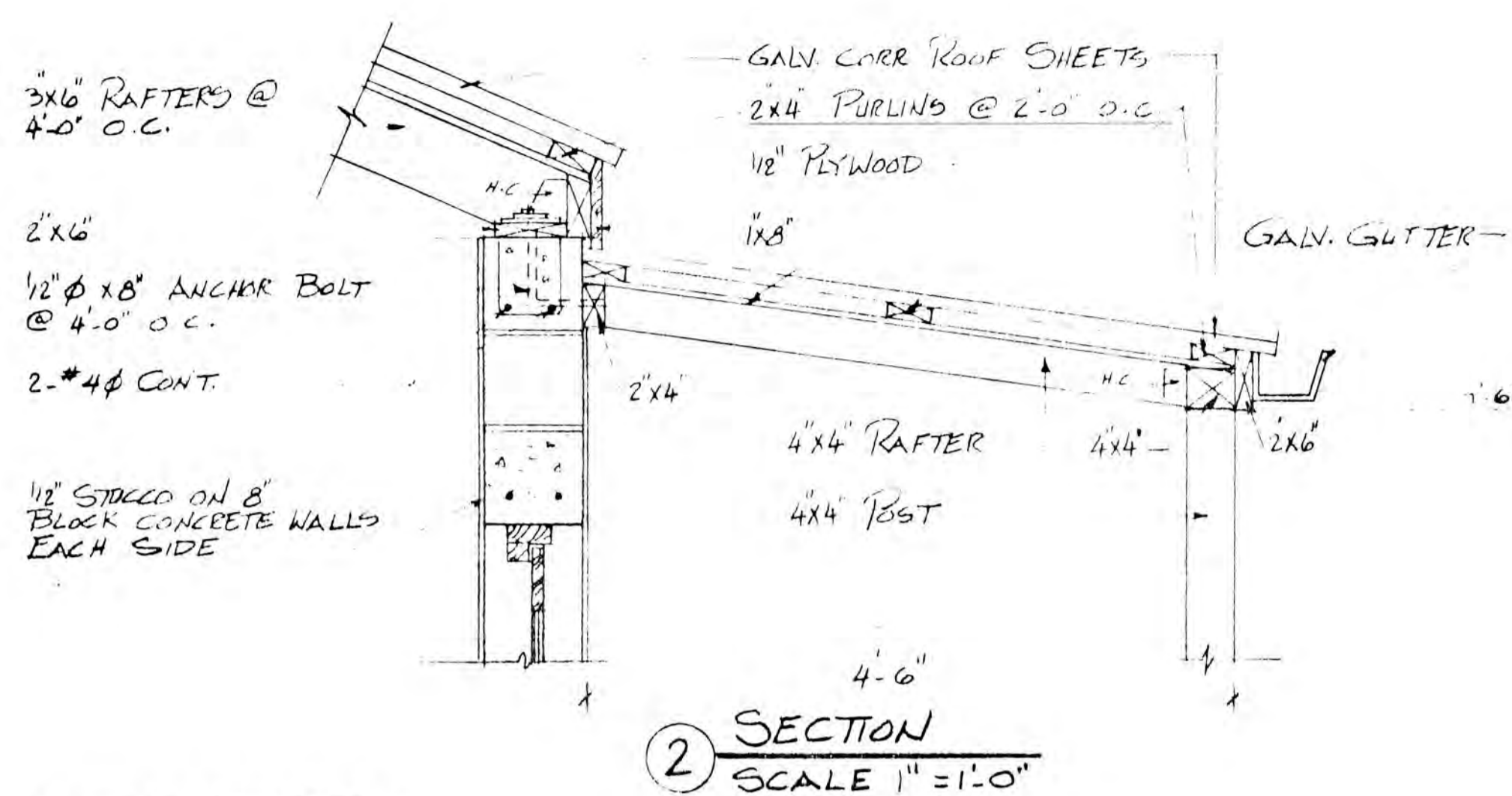
VILLA MADELEINE
 FOUNDATION PLAN & DETAILS

REVISIONS		
mk.	Date	init.

Date 4-4-89
 Scale 1/4" = 1'-0"
 Drawn By M.A.M.
 Appr.
 Job No.
 Ckd.

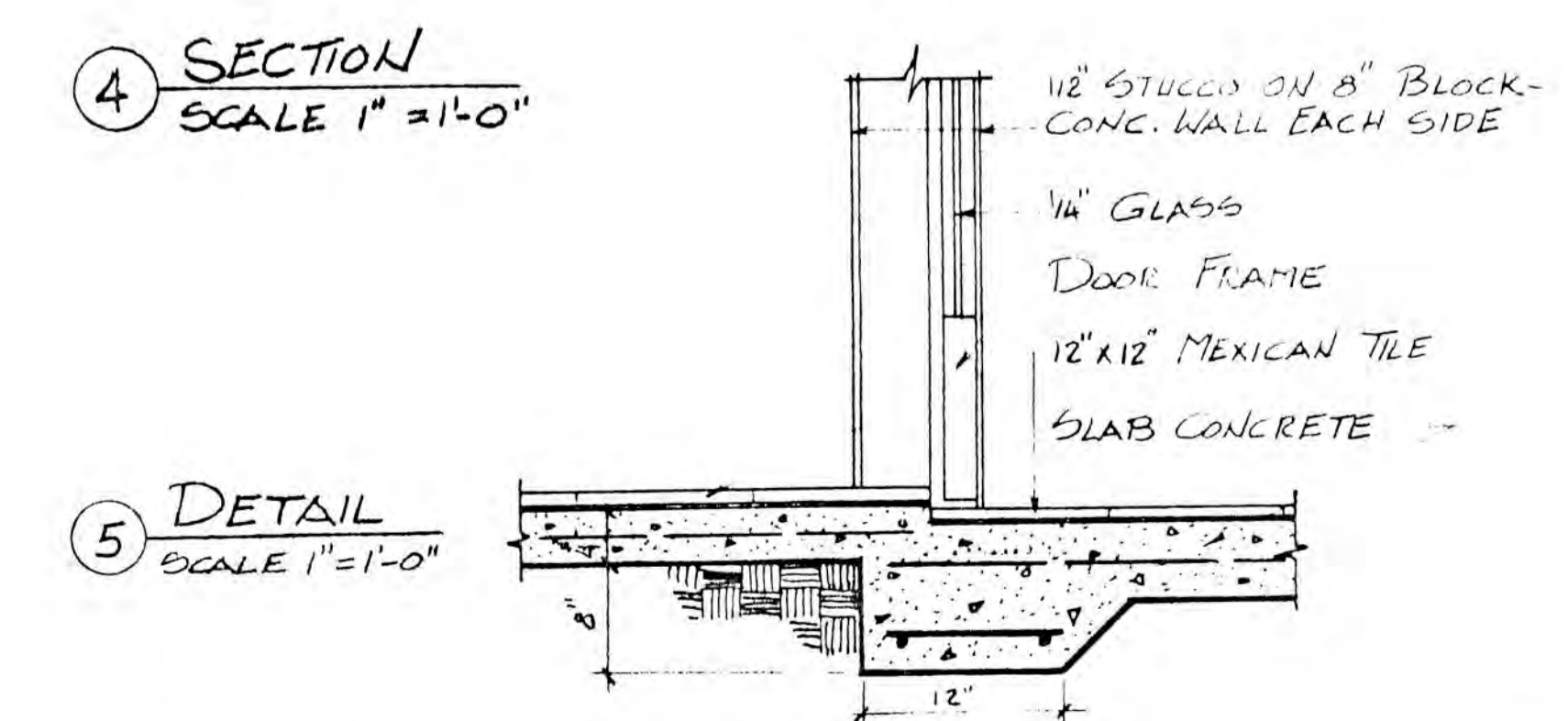
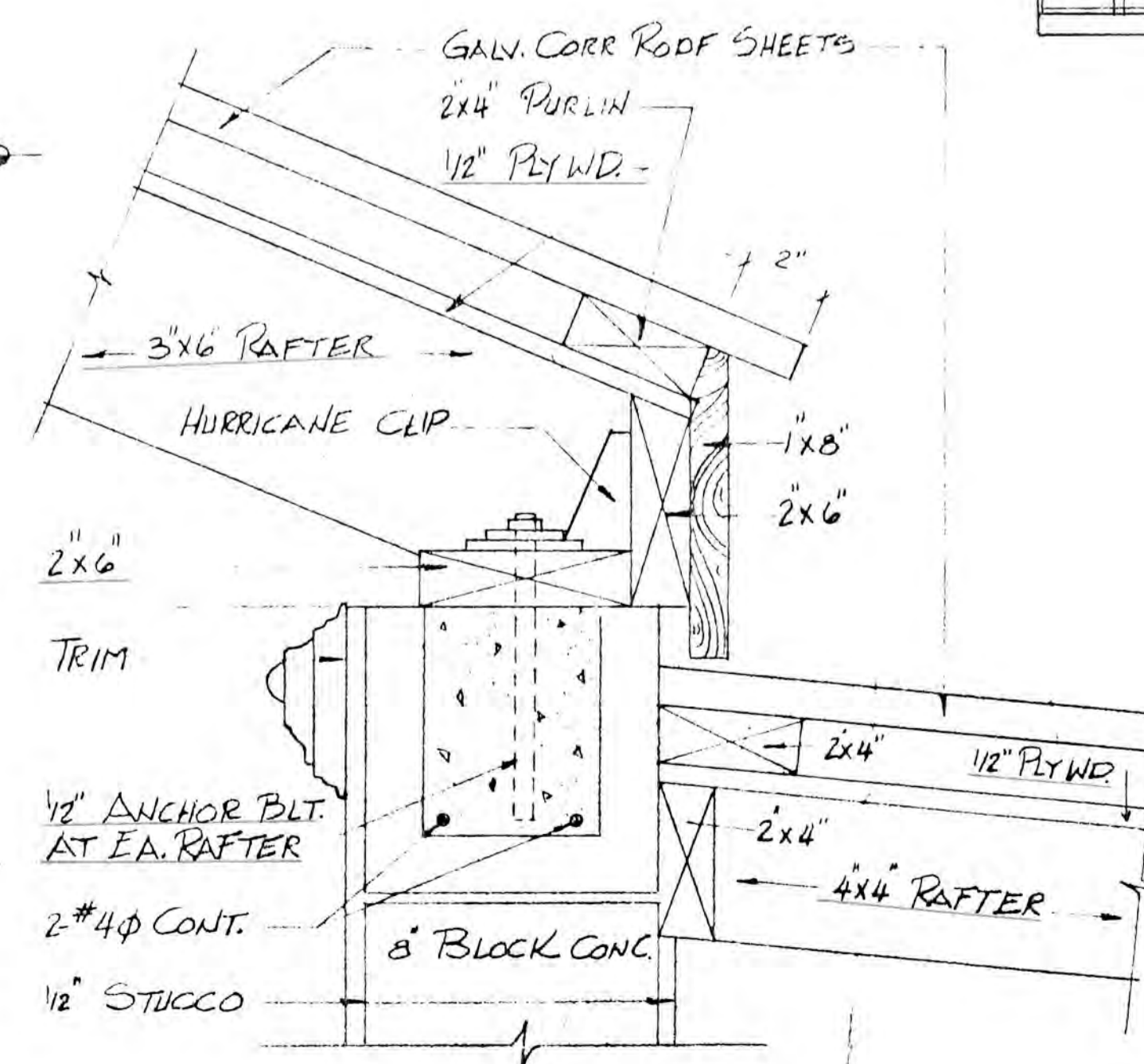
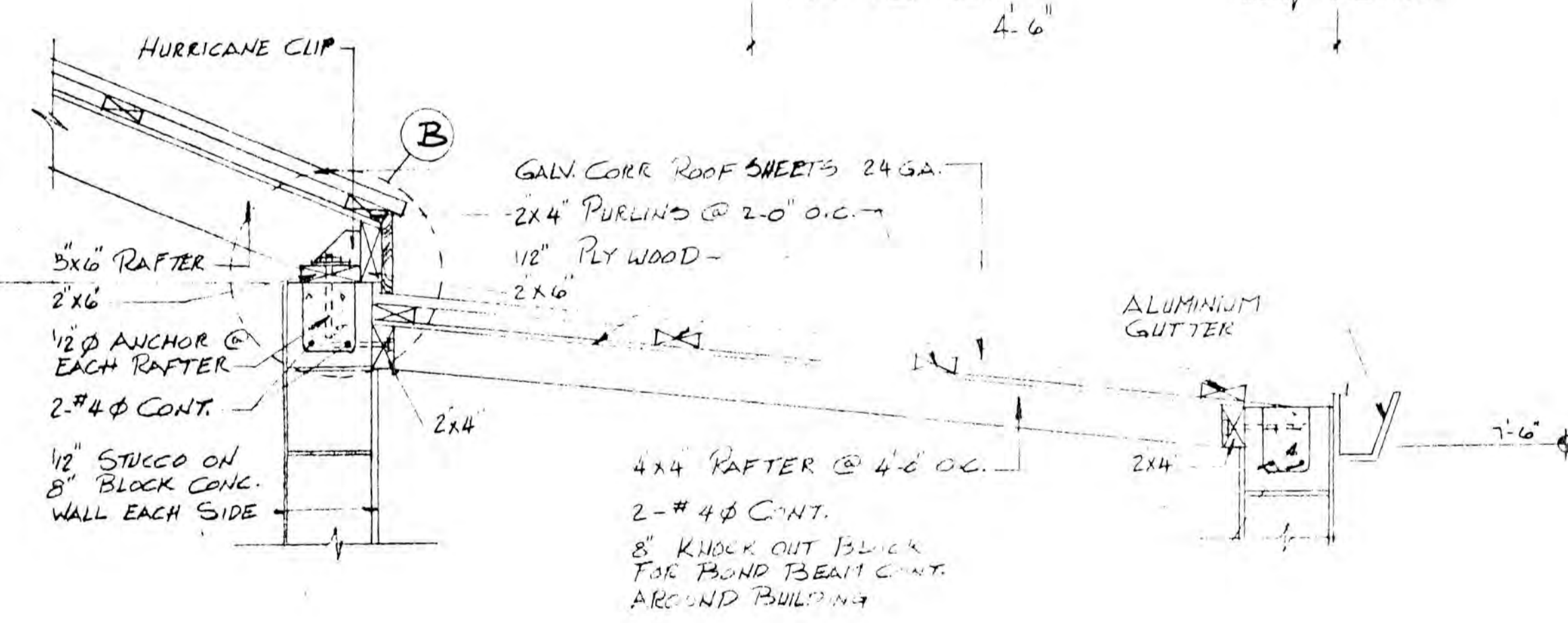
DRAWING

S1

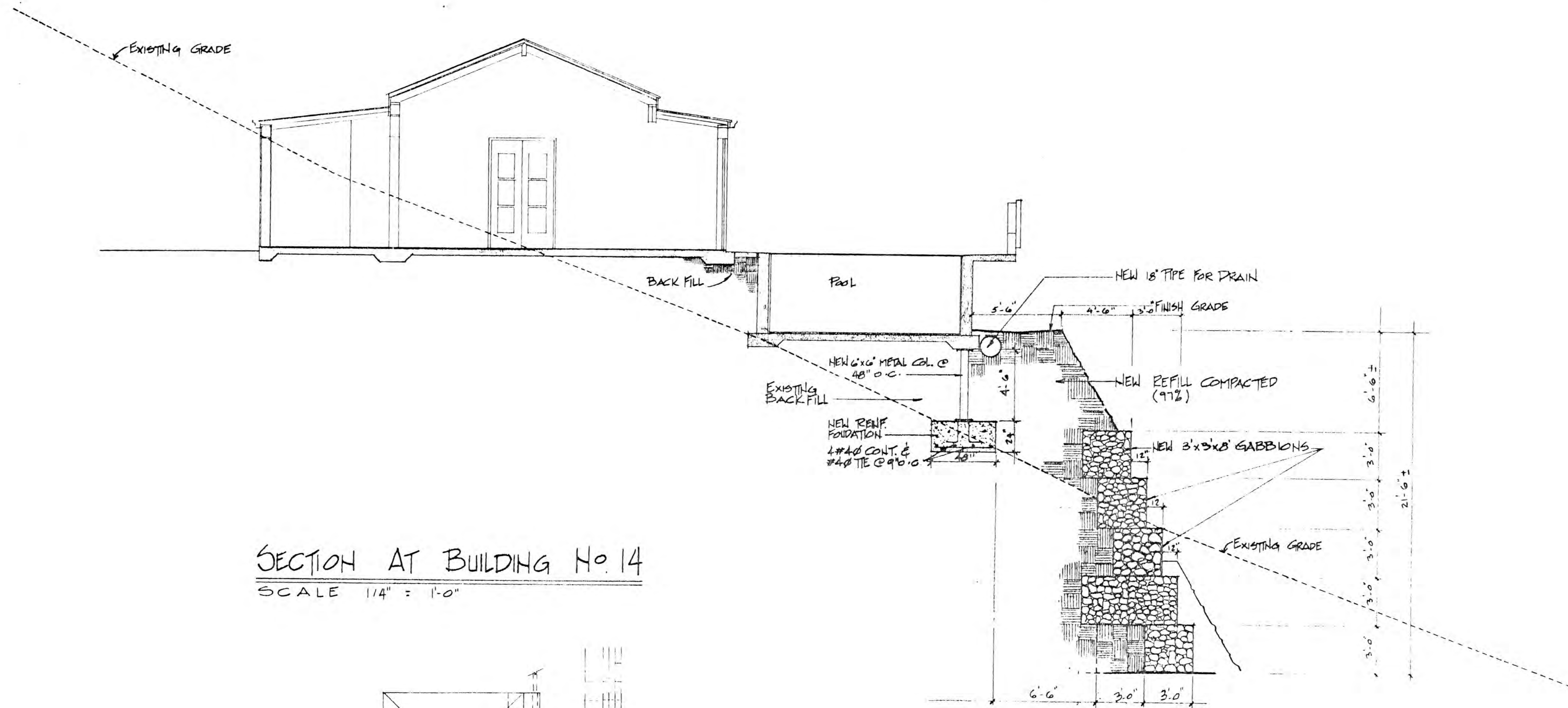


ROOF PLAN & DETAILS

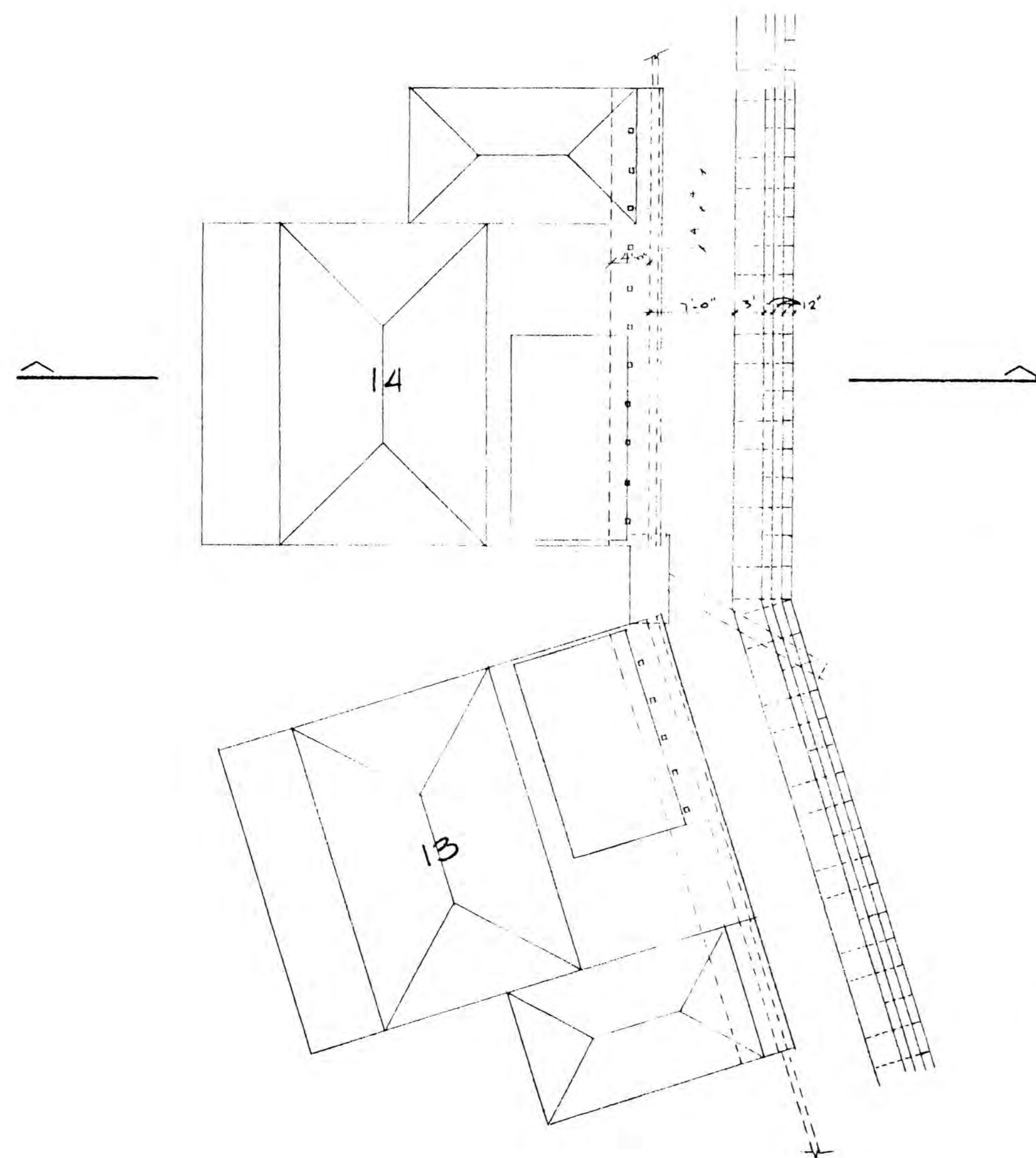
SCALE 1/4" = 1'-0"



CARIBBEAN CONSTRUCTION SERVICES & ASSOCIATES	
DATE: 6.29.1987	APPROVED BY: M.A.M.
VILLA MADELEINE	
ROOF PLAN & SECTIONS	NO. 2



SECTION AT BUILDING No. 14
SCALE 1/4" = 1'-0"



FLOOR PLANS

CARIBBEAN CONSTRUCTION SERVICES
AND ASSOCIATES
47 Mizzen Court, Gallows Bay, St. Croix, USVI
Tel. (809) 773 5011 00820



SITE STABILIZATION
VILLA MADELEINE

REVISIONS

mk.	Date	init

Date 10/28/1988

Scale 1/4" = 1'-0"

Drawn By M.A.L.

Appr.

Job No. 1232

Ckd.

DRAWING

