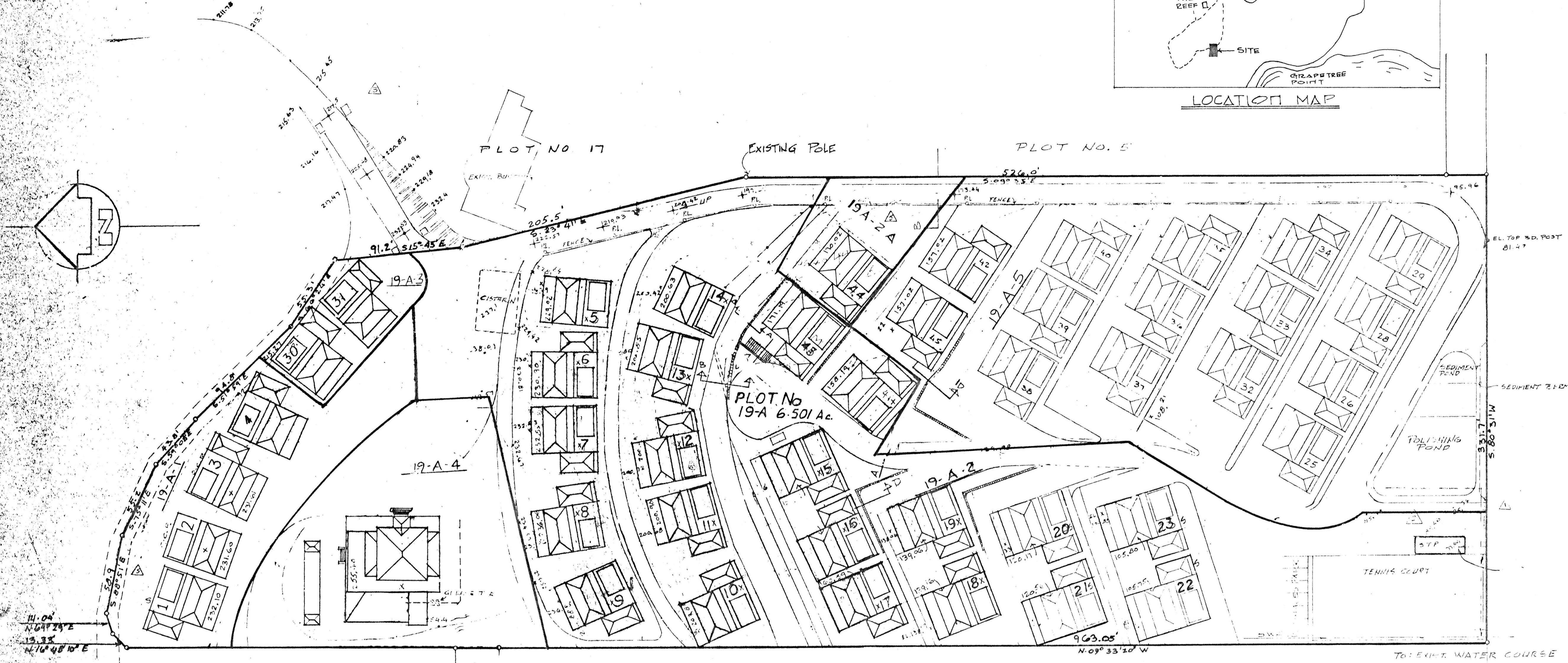


LOCATION MAP



NOTES:
 VILLA MADELINE PHASE I, COMPRISED OF 19-A-1 (0.577 AC.)
 19-A-2 (3.336 AC.) 19-A-2A (0.169 AC.)
 VILLA MADELINE PHASE II, COMPRISED OF 19-A-3 (0.114 AC.)
 19-A-5 (1.831 AC.)
 REFER TO PWD 2344

RESURVEY
 PLOT No 19-A ESTATE TEAGUE BAY, C'STED, STCROIX.
 DATE: MAY 4TH 1999
 PREPARED BY: JAMES BUCHANAN & EGIL KLINT
 LS 226

D.P.N.R. No.
 2344-A